

For Research Use Only

MRPL22 Polyclonal antibody

Catalog Number: 16299-1-AP



Basic Information

Catalog Number: 16299-1-AP	GenBank Accession Number: BC012565	Purification Method: Antigen affinity purification
Size: 150ul , Concentration: 300 µg/ml by Nanodrop and 200 µg/ml by Bradford method using BSA as the standard;	GeneID (NCBI): 29093	Recommended Dilutions: WB 1:200-1:1000
Source: Rabbit	Full Name: mitochondrial ribosomal protein L22	
Isotype: IgG	Calculated MW: 206 aa, 24 kDa	
Immunogen Catalog Number: AG8899	Observed MW: 20 kDa	

Applications

Tested Applications: WB,ELISA	Positive Controls: WB : PC-3 cells,
Species Specificity: human, mouse, rat	

Background Information

Storage

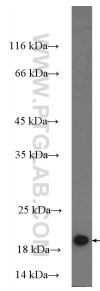
Storage:
Store at -20°C. Stable for one year after shipment.
Storage Buffer:
PBS with 0.02% sodium azide and 50% glycerol pH 7.3.
Aliquoting is unnecessary for -20°C storage

*** 20ul sizes contain 0.1% BSA

For technical support and original validation data for this product please contact:
T: 1 (888) 4PTGLAB (1-888-478-4522) (toll free in USA), or 1(312) 455-8498 (outside USA) E: proteintech@ptglab.com
W: ptglab.com

This product is exclusively available under Proteintech Group brand and is not available to purchase from any other manufacturer.

Selected Validation Data



PC-3 cells were subjected to SDS PAGE followed by western blot with 16299-1-AP (MRPL22 Antibody) at dilution of 1:300 incubated at room temperature for 1.5 hours.