

For Research Use Only

Claudin 15 Polyclonal antibody

Catalog Number: 16302-1-AP



Basic Information

Catalog Number:

16302-1-AP

Size:

150ul, Concentration: 450 ug/ml by Nanodrop;

Source:

Rabbit

Isotype:

IgG

Immunogen Catalog Number:

AG9124

GenBank Accession Number:

BC010160

GeneID (NCBI):

24146

UNIPROT ID:

P56746

Full Name:

claudin 15

Calculated MW:

128aa, 14 kDa; 228aa, 24 kDa

Observed MW:

24-26 kDa

Purification Method:

Antigen affinity purification

Recommended Dilutions:

WB 1:500-1:2000

Applications

Tested Applications:

WB, ELISA

Species Specificity:

human, mouse, rat

Positive Controls:

WB : mouse colon tissue, mouse small intestine tissue, rat colon tissue, rat small intestine tissue

Background Information

Claudins are a family of proteins that are the most important components of tight junctions, where they establish the paracellular barrier that controls the flow of molecules in the intercellular space between the cells of an epithelium. 23 claudins have been identified. They are small (20-27 kilodalton (kDa)) proteins with very similar structure. They have four transmembrane domains, with the N-terminus and the C-terminus in the cytoplasm. Claudin family member Claudin-15 is a classic tight junction molecule.

Storage

Storage:

Store at -20°C. Stable for one year after shipment.

Storage Buffer:

PBS with 0.02% sodium azide and 50% glycerol pH 7.3.

Aliquoting is unnecessary for -20°C storage

*** 20ul sizes contain 0.1% BSA

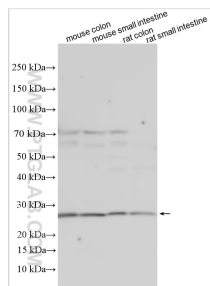
For technical support and original validation data for this product please contact:

T: 1 (888) 4PTGLAB (1-888-478-4522) (toll free in USA), or 1(312) 455-8498 (outside USA)

E: proteintech@ptglab.com
W: ptglab.com

This product is exclusively available under Proteintech Group brand and is not available to purchase from any other manufacturer.

Selected Validation Data



Various lysates were subjected to SDS PAGE followed by western blot with 16302-1-AP (Claudin 15 antibody) at dilution of 1:1000 incubated at room temperature for 1.5 hours.