

For Research Use Only

SMPDL3A Polyclonal antibody

Catalog Number: 16310-1-AP



Basic Information

Catalog Number:

16310-1-AP

Size:

150ul , Concentration: 600 µg/ml by Nanodrop;

Source:

Rabbit

Isotype:

IgG

Immunogen Catalog Number:

AG9340

GenBank Accession Number:

BC018999

GeneID (NCBI):

10924

UNIPROT ID:

Q92484

Full Name:

sphingomyelin phosphodiesterase, acid-like 3A

Calculated MW:

453 aa, 51 kDa

Observed MW:

51 kDa

Purification Method:

Antigen affinity purification

Recommended Dilutions:

WB 1:1000-1:6000

Applications

Tested Applications:

WB, ELISA

Species Specificity:

human, mouse, rat

Positive Controls:

WB : NR8383 cells,

Storage

Storage:

Store at -20°C. Stable for one year after shipment.

Storage Buffer:

PBS with 0.02% sodium azide and 50% glycerol pH 7.3.

Aliquoting is unnecessary for -20°C storage

*** 20ul sizes contain 0.1% BSA

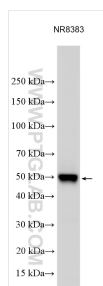
For technical support and original validation data for this product please contact:

T: 1 (888) 4PTGLAB (1-888-478-4522) (toll free in USA), or 1(312) 455-8498 (outside USA)

E: proteintech@ptglab.com
W: ptglab.com

This product is exclusively available under Proteintech Group brand and is not available to purchase from any other manufacturer.

Selected Validation Data



Various lysates were subjected to SDS PAGE followed by western blot with 16310-1-AP (SMPDL3A antibody) at dilution of 1:3000 incubated at room temperature for 1.5 hours.