

For Research Use Only

# AP4B1 Polyclonal antibody

Catalog Number: 16313-1-AP



## Basic Information

<b>Catalog Number:</b> 16313-1-AP	<b>GenBank Accession Number:</b> BC014146	<b>Purification Method:</b> Antigen affinity purification
<b>Size:</b> 150ul , Concentration: 200 µg/ml by Nanodrop;	<b>GeneID (NCBI):</b> 10717	<b>Recommended Dilutions:</b> WB 1:500-1:1000 IP 0.5-4.0 ug for IP and 1:200-1:1000 for WB
<b>Source:</b> Rabbit	<b>Full Name:</b> adaptor-related protein complex 4, beta 1 subunit	
<b>Isotype:</b> IgG	<b>Calculated MW:</b> 739 aa, 83 kDa	
<b>Immunogen Catalog Number:</b> AG9348	<b>Observed MW:</b> 80-83 kDa	

## Applications

<b>Tested Applications:</b> IP, WB, ELISA	<b>Positive Controls:</b>
<b>Species Specificity:</b> human	<b>WB :</b> HeLa cells, MCF-7 cells, MDA-MB-231 cells, MDA-MB-453s cells <b>IP :</b> HeLa cells,

## Background Information

Adaptor protein (AP) complex is a component of intracellular protein transport. The AP4 complex is involved in sorting transmembrane cargo proteins into transport vesicles for trans-Golgi network export. AP4B1 is a member of the AP4 complex, which also includes AP4E1, AP4M1 and AP4S1. Loss-of-function variants in any of these four members can lead to AP-4-associated hereditary spastic paraplegia (HSP), a neurodegenerative disorder (PMID: 30543385). This antibody recognizes AP4B1.

## Storage

**Storage:**  
Store at -20°C. Stable for one year after shipment.  
**Storage Buffer:**  
PBS with 0.02% sodium azide and 50% glycerol pH 7.3.  
Aliquoting is unnecessary for -20°C storage

\*\*\* 20ul sizes contain 0.1% BSA

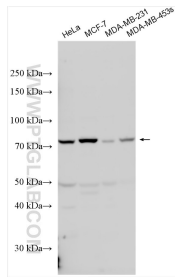
For technical support and original validation data for this product please contact:

T: 1 (888) 4PTGLAB (1-888-478-4522) (toll free in USA), or 1(312) 455-8498 (outside USA)

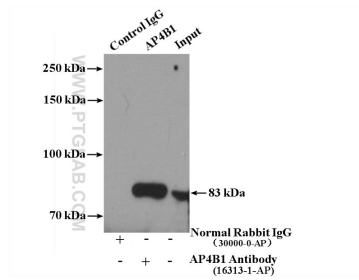
E: [proteintech@ptglab.com](mailto:proteintech@ptglab.com)  
W: [ptglab.com](http://ptglab.com)

This product is exclusively available under Proteintech Group brand and is not available to purchase from any other manufacturer.

## Selected Validation Data



Various lysates were subjected to SDS PAGE followed by western blot with 16313-1-AP (AP4B1 antibody) at dilution of 1:500 incubated at room temperature for 1.5 hours.



IP Result of anti-AP4B1 (IP:16313-1-AP, 4ug; Detection:16313-1-AP 1:300) with HeLa cells lysate 3200ug.