

For Research Use Only

AP4B1 Polyclonal antibody, PBS Only

Catalog Number: 16313-1-PBS



Basic Information

Catalog Number:

16313-1-PBS

Size:

100ug , Concentration: 1 mg/ml by Nanodrop;

Source:

Rabbit

Isotype:

IgG

Immunogen Catalog Number:

AG9348

GenBank Accession Number:

BC014146

GeneID (NCBI):

10717

UNIPROT ID:

Q9Y6B7

Full Name:

adaptor-related protein complex 4, beta 1 subunit

Calculated MW:

739 aa, 83 kDa

Observed MW:

75-83 kDa

Purification Method:

Antigen affinity purification

Applications

Tested Applications:

WB, IP, Indirect ELISA

Species Specificity:

human

Background Information

Adaptor protein (AP) complex is a component of intracellular protein transport. The AP4 complex is involved in sorting transmembrane cargo proteins into transport vesicles for trans-Golgi network export. AP4B1 is a member of the AP4 complex, which also includes AP4E1, AP4M1 and AP4S1. Loss-of-function variants in any of these four members can lead to AP-4-associated hereditary spastic paraplegia (HSP), a neurodegenerative disorder (PMID: 30543385). This antibody recognizes AP4B1.

Storage

Storage:

Store at -80°C.

Storage Buffer:

PBS Only

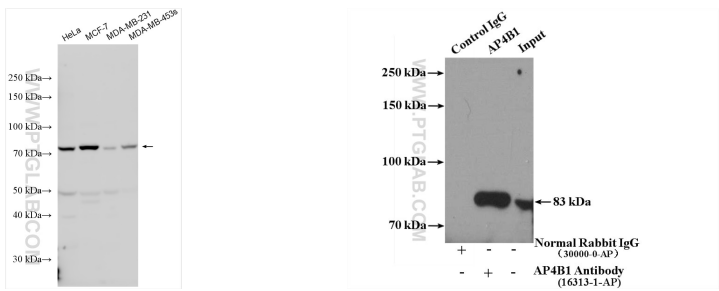
For technical support and original validation data for this product please contact:

T: 1 (888) 4PTGLAB (1-888-478-4522) (toll free in USA), or 1(312) 455-8498 (outside USA)

E: proteintech@ptglab.com
W: ptglab.com

This product is exclusively available under Proteintech Group brand and is not available to purchase from any other manufacturer.

Selected Validation Data



Various lysates were subjected to SDS PAGE followed by western blot with 16313-1-AP (AP4B1 antibody) at dilution of 1:500 incubated at room temperature for 1.5 hours. This data was developed using the same antibody clone with 16313-1-PBS in a different storage buffer formulation.

IP result of anti-AP4B1 (IP:16313-1-AP, 4ug; Detection:16313-1-AP 1:300) with HeLa cells lysate 3200ug. This data was developed using the same antibody clone with 16313-1-PBS in a different storage buffer formulation.