

For Research Use Only

BACE2 Polyclonal antibody

Catalog Number: 16321-1-AP **2 Publications**



Basic Information

Catalog Number: 16321-1-AP	GenBank Accession Number: BC014453	Purification Method: Antigen affinity purification
Size: 150ul, Concentration: 500 µg/ml by Nanodrop and 133 µg/ml by Bradford method using BSA as the standard;	GeneID (NCBI): 25825	Recommended Dilutions: WB 1:500-1:1000 IHC 1:50-1:500
Source: Rabbit	Full Name: beta-site APP-cleaving enzyme 2	
Isotype: IgG	Calculated MW: 518 aa, 56 kDa	
Immunogen Catalog Number: AG9404	Observed MW: 60 kDa	

Applications

Tested Applications: IHC, WB, ELISA	Positive Controls: WB: HEK-293 cells, HeLa cells, SH-SY5Y cells
Cited Applications: WB	IHC: human colon cancer tissue, human breast cancer tissue
Species Specificity: human, mouse, rat	
Cited Species: human, mouse	

Note-IHC: suggested antigen retrieval with TE buffer pH 9.0; (*) Alternatively, antigen retrieval may be performed with citrate buffer pH 6.0

Background Information

Notable Publications

Author	Pubmed ID	Journal	Application
Linbin Dai	34500034	Brain Behav Immun	WB
Yayun Du	31928492	Int J Neurosci	WB

Storage

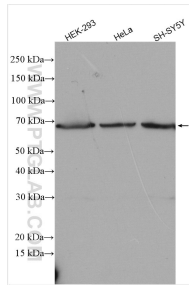
Storage:
Store at -20°C. Stable for one year after shipment.
Storage Buffer:
PBS with 0.02% sodium azide and 50% glycerol pH 7.3.
Aliquoting is unnecessary for -20°C storage

***** 20ul sizes contain 0.1% BSA**

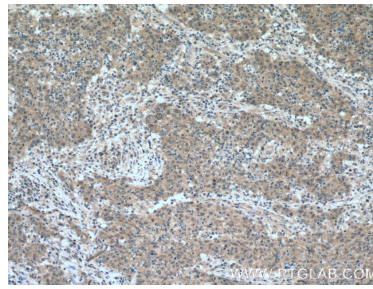
For technical support and original validation data for this product please contact:
T: 1 (888) 4PTGLAB (1-888-478-4522) (toll free in USA), or 1(312) 455-8498 (outside USA)
E: proteintech@ptglab.com
W: ptglab.com

This product is exclusively available under Proteintech Group brand and is not available to purchase from any other manufacturer.

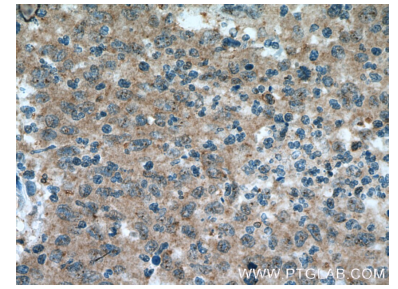
Selected Validation Data



Various lysates were subjected to SDS PAGE followed by western blot with 16321-1-AP (BACE2 antibody) at dilution of 1:800 incubated at room temperature for 1.5 hours.



Immunohistochemical analysis of paraffin-embedded human colon cancer tissue slide using 16321-1-AP (BACE2 Antibody) at dilution of 1:200 (under 10x Lens). Heat mediated antigen retrieval with Tris-EDTA buffer (pH 9.0).



Immunohistochemical analysis of paraffin-embedded human colon cancer tissue slide using 16321-1-AP (BACE2 Antibody) at dilution of 1:200 (under 40x lens). Heat mediated antigen retrieval with Tris-EDTA buffer (pH 9.0).