

For Research Use Only

GFRA1 Polyclonal antibody, PBS Only

Catalog Number: 16324-1-PBS



Basic Information

Catalog Number: 16324-1-PBS	GenBank Accession Number: BC014962	Purification Method: Antigen affinity purification
Size: 100ug, Concentration: 1 mg/ml by Nanodrop;	GeneID (NCBI): 2674	
Source: Rabbit	UNIPROT ID: P56159	
Isotype: IgG	Full Name: GDNF family receptor alpha 1	
Immunogen Catalog Number: AG9407	Calculated MW: 460 aa, 51 kDa	
	Observed MW: 40-50 kDa	

Applications

Tested Applications:
WB, Indirect ELISA

Species Specificity:
human

Background Information

GFRA1, also named as GDNFRA, RETL1 and TRNR1, is a receptor for GDNF. It mediates the GDNF-induced autophosphorylation and activation of the RET receptor. GFRA1 has two isoforms with MW 45-50 kDa and 50-55 kDa.

Storage

Storage:
Store at -80°C.

Storage Buffer:
PBS only, pH7.3

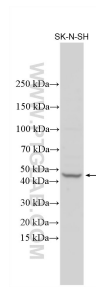
For technical support and original validation data for this product please contact:

T: 1 (888) 4PTGLAB (1-888-478-4522) (toll free in USA), or 1(312) 455-8498 (outside USA)

E: proteintech@ptglab.com
W: ptglab.com

This product is exclusively available under Proteintech Group brand and is not available to purchase from any other manufacturer.

Selected Validation Data



Various lysates were subjected to SDS PAGE followed by western blot with 16324-1-AP (GFRA1 antibody) at dilution of 1:1000 incubated at room temperature for 1.5 hours. This data was developed using the same antibody clone with 16324-1-PBS in a different storage buffer formulation.