

For Research Use Only

CXCL2 Polyclonal antibody

Catalog Number: 16325-1-AP

5 Publications



Basic Information

Catalog Number:

16325-1-AP

Size:

150ul, Concentration: 180 ug/ml by Nanodrop and 187 ug/ml by Bradford method using BSA as the standard;

Source:

Rabbit

Isotype:

IgG

Immunogen Catalog Number:

AG9410

GenBank Accession Number:

BC015753

GeneID (NCBI):

2920

UNIPROT ID:

P19875

Full Name:

chemokine (C-X-C motif) ligand 2

Calculated MW:

107 aa, 11 kDa

Observed MW:

9 kDa

Purification Method:

Antigen affinity purification

Recommended Dilutions:

WB 1:1000-1:6000

Applications

Tested Applications:

WB, ELISA

Cited Applications:

WB, IHC

Species Specificity:

human

Cited Species:

human, mouse

Positive Controls:

WB : human lung tissue,

Background Information

CXCL2, also known as macrophage inflammatory protein 2-alpha (MIP2-alpha), is a member of CXC chemokine family that binds to CXC chemokine receptor 2 (CXCR2). CXCL2 is mainly produced by macrophages, endothelial cells, epithelial cells and tumor cells. CXCL2 plays important roles in various biological progresses such as angiogenesis, inflammation, immune response and cancer biological behaviors. Under inflammatory conditions in CNS, microglia and astrocytes may secrete CXCL2 as well as other chemokines, which induces chemotaxis and infiltration of circulatory neutrophils. Indeed, previous studies suggest that CXCL2 is involved in Alzheimer disease, multiple sclerosis and brain ischemia.

Notable Publications

Author	Pubmed ID	Journal	Application
Xu Zhou	35908353	Bioorg Chem	IHC
Tianmeng Sun	39866843	Front Cell Dev Biol	WB
Xiaoling Wu	39733452	Adv Sci (Weinh)	IHC

Storage

Storage:

Store at -20°C. Stable for one year after shipment.

Storage Buffer:

PBS with 0.02% sodium azide and 50% glycerol pH 7.3.

Aliquoting is unnecessary for -20°C storage

*** 20ul sizes contain 0.1% BSA

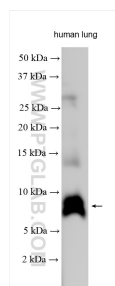
For technical support and original validation data for this product please contact:

T: 1 (888) 4PTGLAB (1-888-478-4522) (toll free in USA), or 1(312) 455-8498 (outside USA)

E: proteintech@ptglab.com
W: ptglab.com

This product is exclusively available under Proteintech Group brand and is not available to purchase from any other manufacturer.

Selected Validation Data



Human lung tissue was subjected to SDS PAGE followed by western blot with 16325-1-AP (CXCL2 antibody) at dilution of 1:6000 incubated at room temperature for 1.5 hours.