

For Research Use Only

PKD1L2 Polyclonal antibody

Catalog Number: 16333-1-AP



Basic Information

Catalog Number:

16333-1-AP

Size:

150ul , Concentration: 750 ug/ml by Nanodrop;

Source:

Rabbit

Isotype:

IgG

Immunogen Catalog Number:

AG9455

GenBank Accession Number:

BC014157

GeneID (NCBI):

114780

UNIPROT ID:

Q7Z442

Full Name:

polycystic kidney disease 1-like 2

Calculated MW:

306aa,33 kDa; 2459aa,273 kDa

Observed MW:

270 kDa

Purification Method:

Antigen affinity purification

Recommended Dilutions:

WB 1:500-1:2000

Applications

Tested Applications:

WB, ELISA

Species Specificity:

human

Positive Controls:

WB : HEK-293 cells, L02 cells

Background Information

PKD1L2 is a member of the polycystin protein family. PKD1L2 may function as a G-protein-coupled component or regulator of cation channel pores. The long isoform of this protein contains 11 transmembrane domains, a latrophilin/CL-1-like GPCR proteolytic site (GPS) domain, and a polycystin-1, lipoxigenase, alpha-toxin (PLAT) domain.

Storage

Storage:

Store at -20°C. Stable for one year after shipment.

Storage Buffer:

PBS with 0.02% sodium azide and 50% glycerol pH 7.3.

Aliquoting is unnecessary for -20°C storage

*** 20ul sizes contain 0.1% BSA

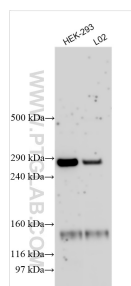
For technical support and original validation data for this product please contact:

T: 1 (888) 4PTGLAB (1-888-478-4522) (toll free in USA), or 1(312) 455-8498 (outside USA)

E: proteintech@ptglab.com
W: ptglab.com

This product is exclusively available under Proteintech Group brand and is not available to purchase from any other manufacturer.

Selected Validation Data



Various lysates were subjected to SDS PAGE followed by western blot with 16333-1-AP (PKD1L2 antibody) at dilution of 1:1000 incubated at room temperature for 1.5 hours.