

For Research Use Only

SLC35A1 Polyclonal antibody

Catalog Number: 16342-1-AP

Featured Product

3 Publications



Basic Information

Catalog Number: 16342-1-AP	GenBank Accession Number: BC017807	Purification Method: Antigen affinity purification
Size: 150ul , Concentration: 450 µg/ml by Nanodrop and 320 µg/ml by Bradford method using BSA as the standard;	GeneID (NCBI): 10559	Recommended Dilutions: IHC 1:50-1:500 IF 1:200-1:800
Source: Rabbit	Full Name: solute carrier family 35 (CMP-sialic acid transporter), member A1	
Isotype: IgG	Calculated MW: 337 aa, 37 kDa	
Immunogen Catalog Number: AG9524	Observed MW: 30-33 kDa	

Applications

Tested Applications: IF, IHC, ELISA	Positive Controls:
Cited Applications: IF, IHC, WB	IHC : mouse spleen tissue, mouse testis tissue, human skin tissue, human spleen tissue
Species Specificity: human, mouse, rat	IF : HepG2 cells,
Cited Species: human	
Note-IHC: suggested antigen retrieval with TE buffer pH 9.0; (*) Alternatively, antigen retrieval may be performed with citrate buffer pH 6.0	

Background Information

Solute carrier family 35 member A1 (SLC35A1), also named as CMP-sialic acid transporter (CST), is responsible for transferring CMP-sialic acid from the cytosol through Golgi membranes, thus playing a vital role in the terminal sialylation of glycan structures. SLC35A1 deficiency causes thrombocytopenia due to impaired megakaryocytopoiesis and excessive platelet clearance in the liver. In addition, SCL35A1 acts independently from sialic acid in functional α-DG O-mannosylation(PMID: 2552652).

Notable Publications

Author	Pubmed ID	Journal	Application
Yalong Wang	31753849	J Exp Med	IHC
Antje Banning	34069698	Cells	WB, IF
Jessie Kulsuptrakul	33730579	Cell Rep	WB

Storage

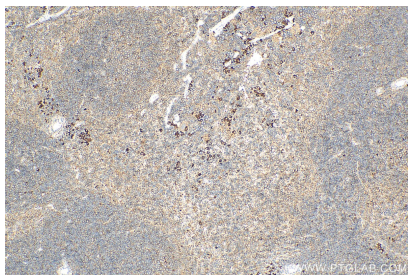
Storage:
Store at -20°C. Stable for one year after shipment.
Storage Buffer:
PBS with 0.02% sodium azide and 50% glycerol pH 7.3.
Aliquoting is unnecessary for -20°C storage

*** 20ul sizes contain 0.1% BSA

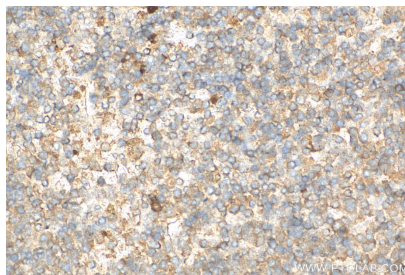
For technical support and original validation data for this product please contact:
T: 1 (888) 4PTGLAB (1-888-478-4522) (toll free in USA), or 1(312) 455-8498 (outside USA)
E: proteintech@ptglab.com
W: ptglab.com

This product is exclusively available under Proteintech Group brand and is not available to purchase from any other manufacturer.

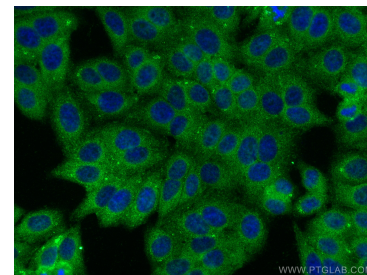
Selected Validation Data



Immunohistochemical analysis of paraffin-embedded mouse spleen tissue slide using 16342-1-AP (SLC35A1 antibody) at dilution of 1:200 (under 10x lens). Heat mediated antigen retrieval with Tris-EDTA buffer (pH 9.0).



Immunohistochemical analysis of paraffin-embedded mouse spleen tissue slide using 16342-1-AP (SLC35A1 antibody) at dilution of 1:200 (under 40x lens). Heat mediated antigen retrieval with Tris-EDTA buffer (pH 9.0).



Immunofluorescent analysis of (4% PFA) fixed HepG2 cells using SLC35A1 antibody (16342-1-AP) at dilution of 1:400 and CoraLite®488-Conjugated AffiniPure Goat Anti-Rabbit IgG(H+L).