

For Research Use Only

SLC3A1 Polyclonal antibody

Catalog Number: 16343-1-AP

Featured Product

9 Publications



Basic Information

Catalog Number:
16343-1-AP

Size:
150ul, Concentration: 350 µg/ml by Nanodrop and 213 µg/ml by Bradford method using BSA as the standard;

Source:
Rabbit

Isotype:
IgG

Immunogen Catalog Number:
AG9525

GenBank Accession Number:
BC022386

GeneID (NCBI):
6519

Full Name:
solute carrier family 3 (cystine, dibasic and neutral amino acid transporters, activator of cystine, dibasic and neutral amino acid transport), member 1

Calculated MW:
685 aa, 79 kDa

Observed MW:
79 kDa

Purification Method:
Antigen affinity purification

Recommended Dilutions:
WB 1:500-1:2000
IP 0.5-4.0 ug for IP and 1:500-1:2000 for WB
IHC 1:50-1:500

Applications

Tested Applications:
IHC, IP, WB, ELISA

Cited Applications:
IF, IHC, WB

Species Specificity:
human, mouse, rat

Cited Species:
goat, human, mouse

Note-IHC: suggested antigen retrieval with TE buffer pH 9.0; (*) Alternatively, antigen retrieval may be performed with citrate buffer pH 6.0

Positive Controls:

WB: HEK-293 cells, mouse kidney tissue, rat kidney tissue

IP: mouse kidney tissue,

IHC: human kidney tissue, human small intestine tissue

Background Information

SLC3A1 (Neutral and basic amino acid transport protein rBAT) is also named as NBAT, D2h, RBAT. It is involved in the high-affinity, sodium-independent transport of cystine and neutral and dibasic amino acids (system B(0,+)-like activity). SLC3A1 can be degraded, at least in part, via the endoplasmic reticulum-associated degradation (ERAD) pathway (PMID:18332091). SLC3A1 has different isoforms vary from 79 kDa to 36 kDa and the 85 kDa glycosylated protein can be detected in SDS-PAGE. (PMID:11546643)

Notable Publications

Author	Pubmed ID	Journal	Application
Gangqi Wang	36332571	Cell Stem Cell	IF
Lauren E Woodard	28317878	Sci Rep	IF
Lauren E Woodard	31221135	BMC Nephrol	WB, IF

Storage

Storage:

Store at -20°C. Stable for one year after shipment.

Storage Buffer:

PBS with 0.02% sodium azide and 50% glycerol pH 7.3.

Aliquoting is unnecessary for -20°C storage

*** 20ul sizes contain 0.1% BSA

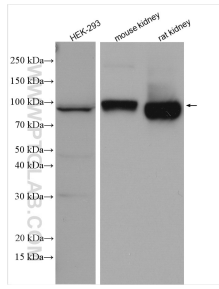
For technical support and original validation data for this product please contact:

T: 1 (888) 4PTGLAB (1-888-478-4522) (toll free in USA), or 1(312) 455-8498 (outside USA)

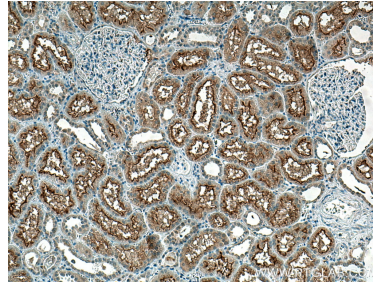
E: proteintech@ptglab.com
W: ptglab.com

This product is exclusively available under Proteintech Group brand and is not available to purchase from any other manufacturer.

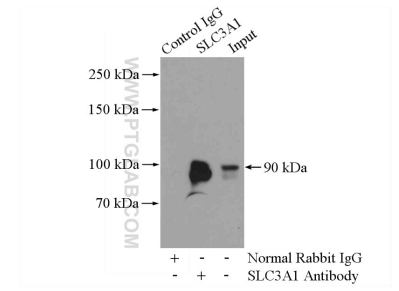
Selected Validation Data



Various lysates were subjected to SDS PAGE followed by western blot with 16343-1-AP (SLC3A1 antibody) at dilution of 1:1000 incubated at room temperature for 1.5 hours.



Immunohistochemical analysis of paraffin-embedded human kidney tissue slide using 16343-1-AP (SLC3A1 antibody) at dilution of 1:200 (under 10x lens). Heat mediated antigen retrieval with Tris-EDTA buffer (pH 9.0).



IP Result of anti-SLC3A1 (IP:16343-1-AP, 4ug; Detection:16343-1-AP 1:1000) with mouse kidney tissue lysate 4000ug.