

PSG11 Polyclonal antibody

Catalog Number: 16352-1-AP

Basic Information

Catalog Number:

16352-1-AP

Size:

150ul, Concentration: 187 ug/ml by Nanodrop and 187 ug/ml by Bradford method using BSA as the standard;

Source:

Rabbit

Isotype:

IgG

Immunogen Catalog Number:

AG9562

GenBank Accession Number:

BC020711

GeneID (NCBI):

5680

UNIPROT ID:

Q9UQ72

Full Name:

pregnancy specific beta-1-glycoprotein 11

Calculated MW:

219 aa, 24 kDa

Observed MW:

24 kDa

Purification Method:

Antigen affinity purification

Recommended Dilutions:

WB 1:500-1:3000

IHC 1:20-1:200

IF/ICC 1:200-1:800

Applications

Tested Applications:

WB, IHC, IF/ICC, ELISA

Species Specificity:

human, mouse

Note-IHC: suggested antigen retrieval with TE buffer pH 9.0; (*) Alternatively, antigen retrieval may be performed with citrate buffer pH 6.0

Positive Controls:

WB : mouse uterus tissue, HeLa cells

IHC : human brain tissue, human kidney tissue, human liver tissue, human lung tissue, human placenta tissue, human testis tissue

IF/ICC : HeLa cells,

Background Information

PSG11, also named as PSG13, PSG14, PSBG-11 and PSBG-13, belongs to the immunoglobulin superfamily and CEA family. PSBG are produced in high quantity during pregnancy. PSG11 and other PSGs induce dose-dependent secretion of anti-inflammatory cytokines by human monocytes. (PMID:11327547)

Storage

Storage:

Store at -20°C. Stable for one year after shipment.

Storage Buffer:

PBS with 0.02% sodium azide and 50% glycerol, pH7.3

Aliquoting is unnecessary for -20°C storage

*** 20ul sizes contain 0.1% BSA

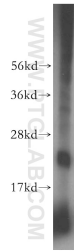
For technical support and original validation data for this product please contact:

T: 1 (888) 4PTGLAB (1-888-478-4522) (toll free in USA), or 1(312) 455-8498 (outside USA)

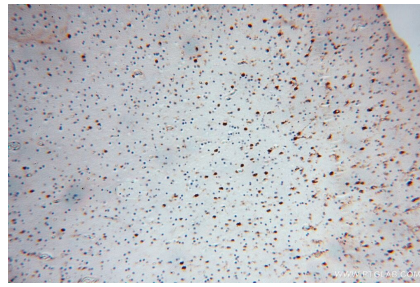
E: proteintech@ptglab.com
W: ptglab.com

This product is exclusively available under Proteintech Group brand and is not available to purchase from any other manufacturer.

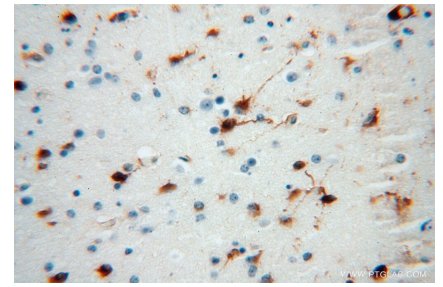
Selected Validation Data



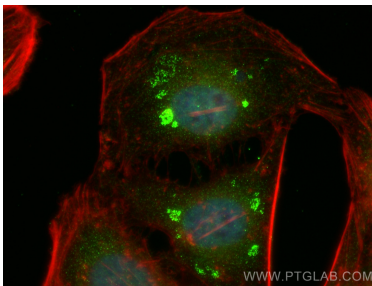
mouse uterus tissue were subjected to SDS PAGE followed by western blot with 16352-1-AP (PSG11 antibody) at dilution of 1:600 incubated at room temperature for 1.5 hours.



Immunohistochemical analysis of paraffin-embedded human brain using 16352-1-AP (PSG11 antibody) at dilution of 1:100 (under 10x lens).



Immunohistochemical analysis of paraffin-embedded human brain using 16352-1-AP (PSG11 antibody) at dilution of 1:100 (under 40x lens).



Immunofluorescent analysis of (4% PFA) fixed HeLa cells using PSG11 antibody (16352-1-AP) at dilution of 1:400 and CoraLite®488-Conjugated Goat Anti-Rabbit IgG(H+L) (SA00013-2), CL594-phalloidin (red).