

For Research Use Only

PSG11 Polyclonal antibody, PBS Only

Catalog Number:16352-1-PBS



Basic Information

Catalog Number:

16352-1-PBS

Size:

100ug , Concentration: 1 mg/ml by Nanodrop;

Source:

Rabbit

Isotype:

IgG

Immunogen Catalog Number:

AG9562

GenBank Accession Number:

BC020711

GeneID (NCBI):

5680

UNIPROT ID:

Q9UQ72

Full Name:

pregnancy specific beta-1-glycoprotein 11

Calculated MW:

219 aa, 24 kDa

Observed MW:

24 kDa

Purification Method:

Antigen affinity purification

Applications

Tested Applications:

WB, IHC, IF/ICC, Indirect ELISA

Species Specificity:

human, mouse

Background Information

PSG11, also named as PSG13, PSG14, PSBG-11 and PSBG-13, belongs to the immunoglobulin superfamily and CEA family. PSBG are produced in high quantity during pregnancy. PSG11 and other PSGs induce dose-dependent secretion of anti-inflammatory cytokines by human monocytes. (PMID:11327547)

Storage

Storage:

Store at -80°C.

Storage Buffer:

PBS only, pH7.3

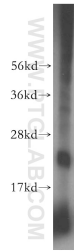
For technical support and original validation data for this product please contact:

T: 1 (888) 4PTGLAB (1-888-478-4522) (toll free in USA), or 1(312) 455-8498 (outside USA)

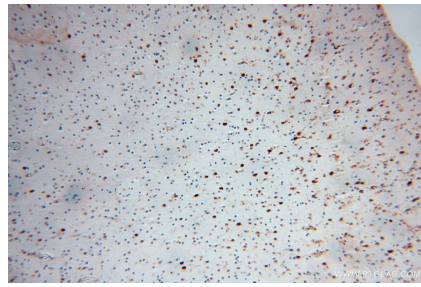
E: proteintech@ptglab.com
W: ptglab.com

This product is exclusively available under Proteintech Group brand and is not available to purchase from any other manufacturer.

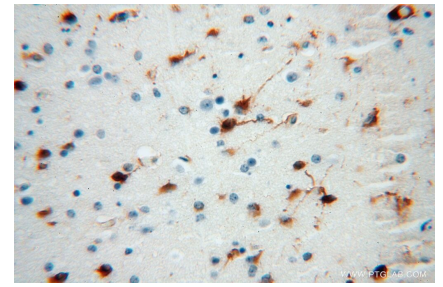
Selected Validation Data



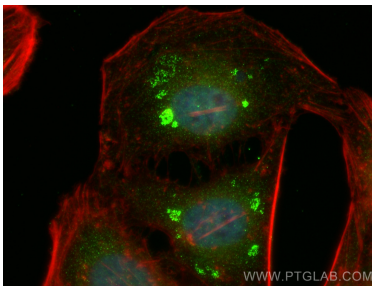
mouse uterus tissue were subjected to SDS PAGE followed by western blot with 16352-1-AP (PSG11 antibody) at dilution of 1:600 incubated at room temperature for 1.5 hours. This data was developed using the same antibody clone with 16352-1-PBS in a different storage buffer formulation.



Immunohistochemical analysis of paraffin-embedded human brain using 16352-1-AP (PSG11 antibody) at dilution of 1:100 (under 10x lens). This data was developed using the same antibody clone with 16352-1-PBS in a different storage buffer formulation.



Immunohistochemical analysis of paraffin-embedded human brain using 16352-1-AP (PSG11 antibody) at dilution of 1:100 (under 40x lens). This data was developed using the same antibody clone with 16352-1-PBS in a different storage buffer formulation.



Immunofluorescent analysis of (4% PFA) fixed HeLa cells using PSG11 antibody (16352-1-AP) at dilution of 1:400 and Coralite@488-Conjugated Goat Anti-Rabbit IgG(H+L) (SA00013-2), CL594-phalloidin (red). This data was developed using the same antibody clone with 16352-1-PBS in a different storage buffer formulation.