

For Research Use Only

BLZF1 Polyclonal antibody

Catalog Number: 16354-1-AP **3 Publications**



Basic Information

Catalog Number: 16354-1-AP	GenBank Accession Number: BC020716	Purification Method: Antigen affinity purification
Size: 150ul , Concentration: 350 ug/ml by Nanodrop and 180 ug/ml by Bradford method using BSA as the standard;	GeneID (NCBI): 8548	Recommended Dilutions: WB 1:500-1:1000 IHC 1:50-1:500
Source: Rabbit	UNIPROT ID: Q9H2G9	
Isotype: IgG	Full Name: basic leucine zipper nuclear factor 1	
Immunogen Catalog Number: AG9564	Calculated MW: 400 aa, 45 kDa	
	Observed MW: 45 kDa	

Applications

Tested Applications: WB, IHC, ELISA	Positive Controls:
Cited Applications: WB	WB : K-562 cells, Jurkat cells
Species Specificity: human, mouse	IHC : human liver cancer tissue, mouse liver tissue
Cited Species: human	
Note-IHC: suggested antigen retrieval with TE buffer pH 9.0; (*) Alternatively, antigen retrieval may be performed with citrate buffer pH 6.0	

Background Information

BLZF1 (basic leucine zipper nuclear factor 1), also known as JEM1 or Golgin-45, maps to human chromosome 1q24, encodes for a 3 kb mRNA that is translated into a 45 kDa protein. BLZF1 is a member of b-ZIP family, and has been implicated in epigenetic regulation and Wnt/ β -catenin signaling.

Notable Publications

Author	Pubmed ID	Journal	Application
Maryam Arab	36512212	Methods Mol Biol	WB
Michael E Bekier	28814501	Mol Biol Cell	WB
Sarah Bui	36512231	Methods Mol Biol	WB

Storage

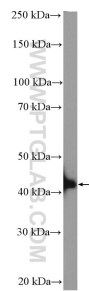
Storage:
Store at -20°C. Stable for one year after shipment.
Storage Buffer:
PBS with 0.02% sodium azide and 50% glycerol pH 7.3.
Aliquoting is unnecessary for -20°C storage

*** 20ul sizes contain 0.1% BSA

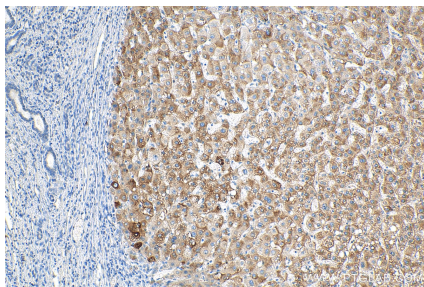
For technical support and original validation data for this product please contact:
T: 1 (888) 4PTGLAB (1-888-478-4522) (toll free in USA), or 1(312) 455-8498 (outside USA)
E: proteintech@ptglab.com
W: ptglab.com

This product is exclusively available under Proteintech Group brand and is not available to purchase from any other manufacturer.

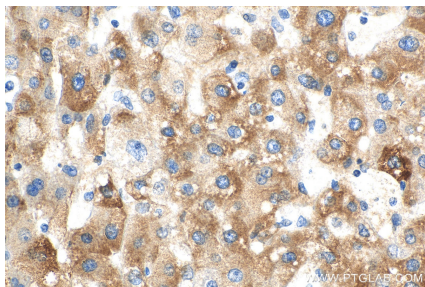
Selected Validation Data



K-562 cells were subjected to SDS PAGE followed by western blot with 16354-1-AP (BLZF1 antibody) at dilution of 1:600 incubated at room temperature for 1.5 hours.



Immunohistochemical analysis of paraffin-embedded human liver cancer tissue slide using 16354-1-AP (BLZF1 antibody) at dilution of 1:200 (under 10x lens). Heat mediated antigen retrieval with Tris-EDTA buffer (pH 9.0).



Immunohistochemical analysis of paraffin-embedded human liver cancer tissue slide using 16354-1-AP (BLZF1 antibody) at dilution of 1:200 (under 40x lens). Heat mediated antigen retrieval with Tris-EDTA buffer (pH 9.0).