

For Research Use Only

cyclin I Polyclonal antibody

Catalog Number: 16357-1-AP



Basic Information

Catalog Number: 16357-1-AP	GenBank Accession Number: BC004975	Purification Method: Antigen affinity purification
Size: 150ul , Concentration: 140 µg/ml by Nanodrop and 133 µg/ml by Bradford method using BSA as the standard;	GeneID (NCBI): 10983	Recommended Dilutions: WB 1:2000-1:10000 IHC 1:20-1:200
Source: Rabbit	Full Name: cyclin I	
Isotype: IgG	Calculated MW: 43 kDa	
Immunogen Catalog Number: AG0493	Observed MW: 43 kDa	

Applications

Tested Applications: IHC, WB, ELISA	Positive Controls:
Species Specificity: human, mouse, rat	WB : mouse brain tissue, human brain tissue, rat skeletal muscle tissue, mouse skeletal muscle tissue, rat brain tissue
Note-IHC: suggested antigen retrieval with TE buffer pH 9.0; (*) Alternatively, antigen retrieval may be performed with citrate buffer pH 6.0	IHC : human heart tissue, human brain tissue, human liver tissue, human lung tissue, human ovary tissue, human placenta tissue, human spleen tissue, human testis tissue

Background Information

Storage

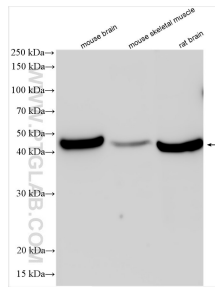
Storage:
Store at -20°C. Stable for one year after shipment.
Storage Buffer:
PBS with 0.02% sodium azide and 50% glycerol pH 7.3.
Aliquoting is unnecessary for -20°C storage

*** 20ul sizes contain 0.1% BSA

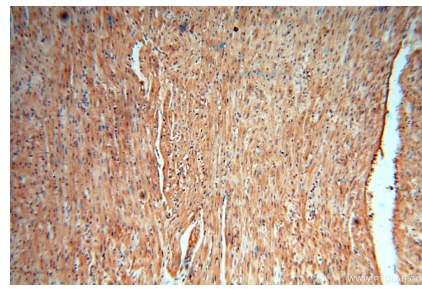
For technical support and original validation data for this product please contact:
T: 1 (888) 4PTGLAB (1-888-478-4522) (toll free in USA), or 1(312) 455-8498 (outside USA)
E: proteintech@ptglab.com
W: ptglab.com

This product is exclusively available under Proteintech Group brand and is not available to purchase from any other manufacturer.

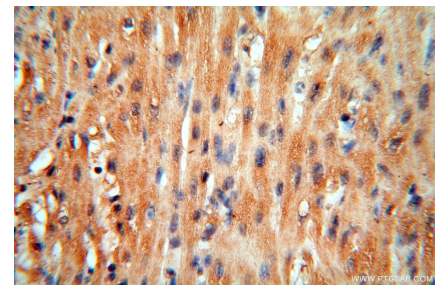
Selected Validation Data



Various lysates were subjected to SDS PAGE followed by western blot with 16357-1-AP (cyclin I antibody) at dilution of 1:5000 incubated at room temperature for 1.5 hours.



Immunohistochemical analysis of paraffin-embedded human heart using 16357-1-AP (cyclin I antibody) at dilution of 1:50 (under 10x lens).



Immunohistochemical analysis of paraffin-embedded human heart using 16357-1-AP (cyclin I antibody) at dilution of 1:50 (under 40x lens).