

For Research Use Only

MRPS21 Polyclonal antibody

Catalog Number: 16359-1-AP



Basic Information

Catalog Number: 16359-1-AP	GenBank Accession Number: BC004566	Purification Method: Antigen affinity purification
Size: 150ul , Concentration: 450 µg/ml by Nanodrop and 267 µg/ml by Bradford method using BSA as the standard;	GeneID (NCBI): 54460	Recommended Dilutions: IHC 1:50-1:500 IF 1:50-1:500
Source: Rabbit	Full Name: mitochondrial ribosomal protein S21	
Isotype: IgG	Calculated MW: 87 aa, 11 kDa	
Immunogen Catalog Number: AG8343		

Applications

Tested Applications: IF, IHC, ELISA	Positive Controls: IHC : human pancreas tissue, IF : HepG2 cells,
Species Specificity: human, mouse, rat	
Note-IHC: suggested antigen retrieval with TE buffer pH 9.0; (*) Alternatively, antigen retrieval may be performed with citrate buffer pH 6.0	

Background Information

Storage

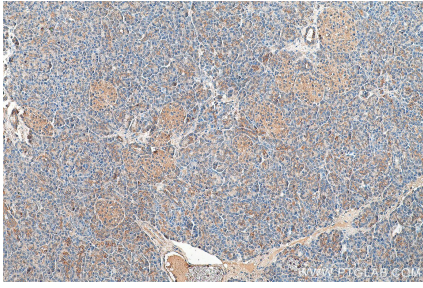
Storage:
Store at -20°C. Stable for one year after shipment.
Storage Buffer:
PBS with 0.02% sodium azide and 50% glycerol pH 7.3.
Aliquoting is unnecessary for -20°C storage

*** 20ul sizes contain 0.1% BSA

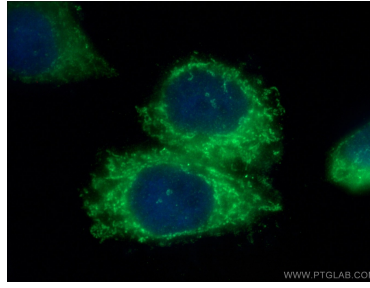
For technical support and original validation data for this product please contact:
T: 1 (888) 4PTGLAB (1-888-478-4522) (toll free in USA), or 1(312) 455-8498 (outside USA) E: proteintech@ptglab.com W: ptglab.com

This product is exclusively available under Proteintech Group brand and is not available to purchase from any other manufacturer.

Selected Validation Data



Immunohistochemical analysis of paraffin-embedded human pancreas tissue slide using 16359-1-AP (MRPS21 antibody) at dilution of 1:200 (under 10x lens).



Immunofluorescent analysis of (4% PFA) fixed HepG2 cells using 16359-1-AP (MRPS21 antibody) at dilution of 1:50 and Alexa Fluor 488-Conjugated AffiniPure Goat Anti-Rabbit IgG(H+L).