

For Research Use Only

FZR1/Cdh1 Polyclonal antibody

Catalog Number: 16368-1-AP

Featured Product

10 Publications



Basic Information

Catalog Number:

16368-1-AP

Size:

150ul, Concentration: 500 ug/ml by Nanodrop and 220 ug/ml by Bradford method using BSA as the standard;

Source:

Rabbit

Isotype:

IgG

Immunogen Catalog Number:

AG9201

GenBank Accession Number:

BC013413

GeneID (NCBI):

51343

UNIPROT ID:

Q9UM11

Full Name:

fizzy/cell division cycle 20 related 1 (Drosophila)

Calculated MW:

493 aa, 55 kDa

Observed MW:

55 kDa

Purification Method:

Antigen affinity purification

Recommended Dilutions:

WB 1:1000-1:6000

IP 0.5-4.0 ug for 1.0-3.0 mg of total protein lysate

IHC 1:50-1:500

IF/ICC 1:50-1:500

Applications

Tested Applications:

WB, IHC, IF/ICC, FC (Intra), IP, ELISA

Cited Applications:

WB, IP

Species Specificity:

human, mouse, rat

Cited Species:

human, mouse

Note-IHC: suggested antigen retrieval with TE buffer pH 9.0; (*) Alternatively, antigen retrieval may be performed with citrate buffer pH 6.0

Positive Controls:

WB: HMy2.CIR cells, C6 cells, HepG2 cells, mouse heart tissue, mouse liver tissue, NIH/3T3 cells, HeLa cells, Jurkat cells

IP: mouse heart tissue,

IHC: human liver tissue, human breast cancer tissue

IF/ICC: HepG2 cells, HeLa cells

Background Information

FZR1 gene, also named as FYR, FZR and KIAA1242, has been previously shown to be mutated in lobular breast carcinomas. Direct evidence of FZR1 mutations triggering tumorigenesis has been investigated. FZR1 is a key regulator of ligase activity of the anaphase promoting complex/cyclosome (APC/C) which is playing vital roles in cell cycle progression. There are 7 WD-repeat domains in FZR1. Upon phosphorylation and dephosphorylation, it interacts with other components to modulate cell mitosis. This gene is different to E-cadherin (CDH1) which is an epithelial cell adhesion molecule. It has 55 kDa, 54 kDa and 45 kDa isoforms.

Notable Publications

Author	Pubmed ID	Journal	Application
Changyin Zhou	34559563	Sci Adv	WB
Marie-Claude Perry	25246633	Mol Cell Biol	WB
Arielle N Valdez-Sinon	32434143	iScience	IP, WB

Storage

Storage:

Store at -20°C. Stable for one year after shipment.

Storage Buffer:

PBS with 0.02% sodium azide and 50% glycerol pH 7.3.

Aliquoting is unnecessary for -20°C storage

*** 20ul sizes contain 0.1% BSA

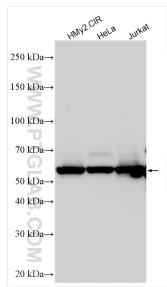
For technical support and original validation data for this product please contact:

T: 1 (888) 4PTGLAB (1-888-478-4522) (toll free in USA), or 1(312) 455-8498 (outside USA)

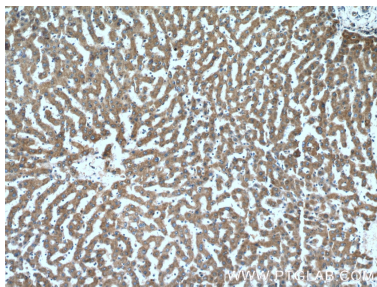
E: proteintech@ptglab.com
W: ptglab.com

This product is exclusively available under Proteintech Group brand and is not available to purchase from any other manufacturer.

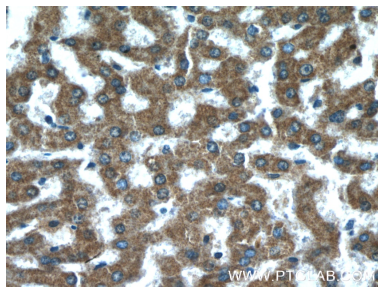
Selected Validation Data



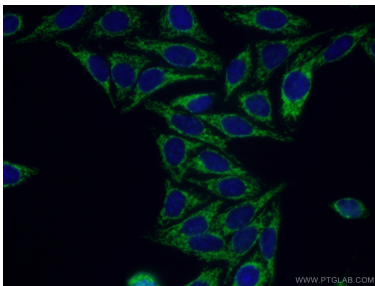
Various lysates were subjected to SDS PAGE followed by western blot with 16368-1-AP (FZR1/Cdh1 antibody) at dilution of 1:3000 incubated at room temperature for 1.5 hours.



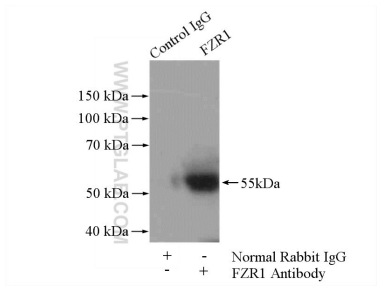
Immunohistochemical analysis of paraffin-embedded human liver tissue slide using 16368-1-AP (FZR1 antibody) at dilution of 1:200 (under 10x lens).



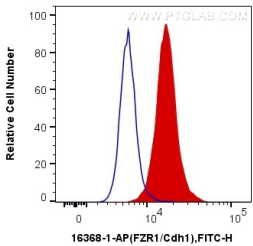
Immunohistochemical analysis of paraffin-embedded human liver tissue slide using 16368-1-AP (FZR1 antibody) at dilution of 1:200 (under 40x lens).



Immunofluorescent analysis of (-20°C Ethanol) fixed HepG2 cells using 16368-1-AP (FZR1 antibody) at dilution of 1:50 and Alexa Fluor 488-conjugated AffiniPure Goat Anti-Rabbit IgG(H+L).



IP result of anti-FZR1/Cdh1 (IP:16368-1-AP, 4ug; Detection:16368-1-AP 1:500) with mouse heart tissue lysate 3200ug.



1X10⁶ HeLa cells were intracellularly stained with 0.2 ug Anti-Human FZR1/Cdh1 (16368-1-AP) and CoraLite®488-Conjugated AffiniPure Goat Anti-Rabbit IgG(H+L) at dilution 1:1000 (red), or 0.2 ug Control Antibody. Cells were fixed with 4% PFA and permeabilized with Flow Cytometry Perm Buffer (PF00011-C).