

For Research Use Only

PIGO Polyclonal antibody

Catalog Number: 16369-1-AP



Basic Information

Catalog Number:

16369-1-AP

Size:

150ul, Concentration: 450 ug/ml by Nanodrop and 207 ug/ml by Bradford method using BSA as the standard;

Source:

Rabbit

Isotype:

IgG

Immunogen Catalog Number:

AG9232

GenBank Accession Number:

BC013987

GeneID (NCBI):

84720

UNIPROT ID:

Q8TEQ8

Full Name:

phosphatidylinositol glycan anchor biosynthesis, class O

Calculated MW:

1089aa, 119 kDa; 454aa, 50 kDa

Observed MW:

74 kDa

Purification Method:

Antigen affinity purification

Recommended Dilutions:

WB 1:500-1:2000

IHC 1:20-1:200

IF/ICC 1:10-1:100

Applications

Tested Applications:

WB, IHC, IF/ICC, ELISA

Species Specificity:

human, mouse, rat

Note-IHC: suggested antigen retrieval with TE buffer pH 9.0; (*) Alternatively, antigen retrieval may be performed with citrate buffer pH 6.0

Positive Controls:

WB : HeLa cells, A431 cells, COLO 320 cells, mouse spleen tissue

IHC : human liver tissue, human kidney tissue, human skin tissue, human spleen tissue, human testis tissue

IF/ICC : MCF-7 cells,

Storage

Storage:

Store at -20°C. Stable for one year after shipment.

Storage Buffer:

PBS with 0.02% sodium azide and 50% glycerol pH 7.3.

Aliquoting is unnecessary for -20°C storage

*** 20ul sizes contain 0.1% BSA

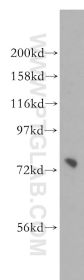
For technical support and original validation data for this product please contact:

T: 1 (888) 4PTGLAB (1-888-478-4522) (toll free in USA), or 1(312) 455-8498 (outside USA)

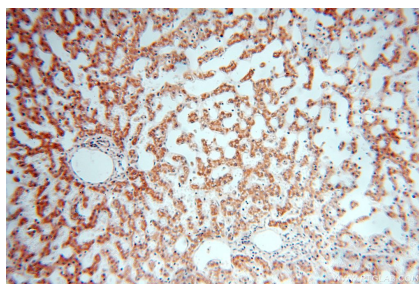
E: proteintech@ptglab.com
W: ptglab.com

This product is exclusively available under Proteintech Group brand and is not available to purchase from any other manufacturer.

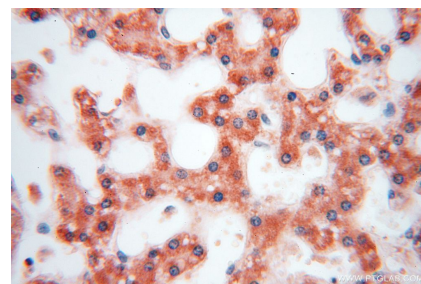
Selected Validation Data



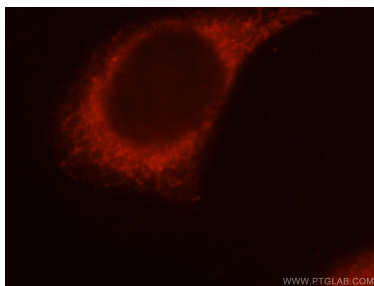
HeLa cells were subjected to SDS PAGE followed by western blot with 16369-1-AP (PIGO antibody) at dilution of 1:300 incubated at room temperature for 1.5 hours.



Immunohistochemical analysis of paraffin-embedded human liver using 16369-1-AP (PIGO antibody) at dilution of 1:100 (under 10x lens).



Immunohistochemical analysis of paraffin-embedded human liver using 16369-1-AP (PIGO antibody) at dilution of 1:100 (under 40x lens).



Immunofluorescent analysis of MCF-7 cells, using PIGO antibody 16369-1-AP at 1:25 dilution and Rhodamine-labeled goat anti-rabbit IgG (red).