

For Research Use Only

# GTPBP9 Polyclonal antibody

Catalog Number: 16371-1-AP

Featured Product

6 Publications



## Basic Information

### Catalog Number:

16371-1-AP

### Size:

150ul, Concentration: 200 ug/ml by Nanodrop and 200 ug/ml by Bradford method using BSA as the standard;

### Source:

Rabbit

### Isotype:

IgG

### Immunogen Catalog Number:

AG9283

### GenBank Accession Number:

BC013925

### GeneID (NCBI):

29789

### UNIPROT ID:

Q9NTK5

### Full Name:

Obg-like ATPase 1

### Calculated MW:

396aa, 45 kDa; 278aa, 31 kDa

### Observed MW:

45 kDa

### Purification Method:

Antigen affinity purification

### Recommended Dilutions:

WB 1:500-1:1000

IHC 1:50-1:500

IF/ICC 1:50-1:500

## Applications

### Tested Applications:

WB, IHC, IF/ICC, ELISA

### Cited Applications:

WB, IF

### Species Specificity:

human

### Cited Species:

human, mouse

**Note-IHC: suggested antigen retrieval with TE buffer pH 9.0; (\*) Alternatively, antigen retrieval may be performed with citrate buffer pH 6.0**

### Positive Controls:

WB : Jurkat cells, HepG2 cells, MCF-7 cells

IHC : human liver cancer tissue, human colon cancer tissue

IF/ICC : MCF-7 cells,

## Notable Publications

Author	Pubmed ID	Journal	Application
Gayathri Narasimhan	31063653	Clin Exp Pharmacol Physiol	WB
Zhi-Ping Fu	39381749	iScience	WB
Praveen K Dubey	38889130	PLoS One	WB

## Storage

### Storage:

Store at -20°C. Stable for one year after shipment.

### Storage Buffer:

PBS with 0.02% sodium azide and 50% glycerol pH 7.3.

Aliquoting is unnecessary for -20°C storage

\*\*\* 20ul sizes contain 0.1% BSA

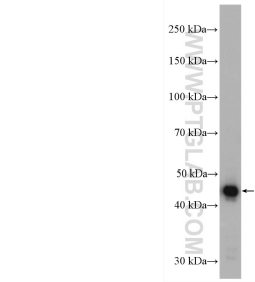
For technical support and original validation data for this product please contact:

T: 1 (888) 4PTGLAB (1-888-478-4522) (toll free in USA), or 1(312) 455-8498 (outside USA)

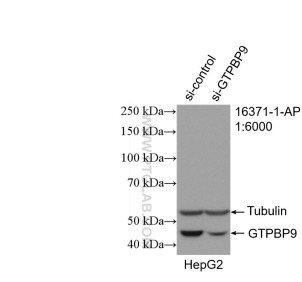
E: [proteintech@ptglab.com](mailto:proteintech@ptglab.com)  
W: [ptglab.com](http://ptglab.com)

This product is exclusively available under Proteintech Group brand and is not available to purchase from any other manufacturer.

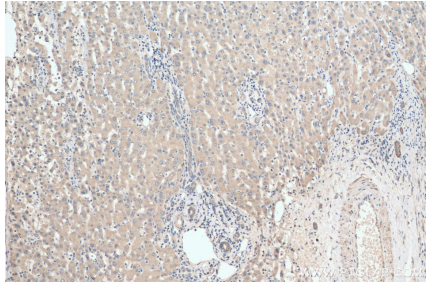
Selected Validation Data



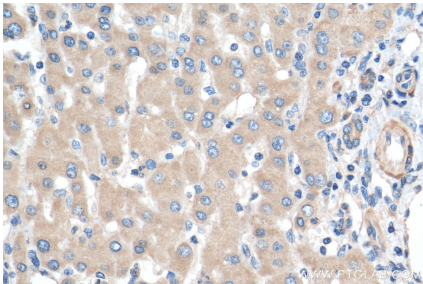
Jurkat cells were subjected to SDS PAGE followed by western blot with 16371-1-AP (GTPBP9 antibody) at dilution of 1:600 incubated at room temperature for 1.5 hours.



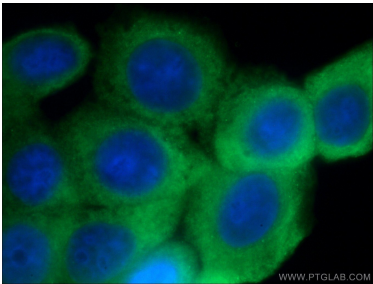
WB result of GTPBP9 antibody (16371-1-AP; 1:6000; incubated at room temperature for 1.5 hours) with sh-Control and sh-GTPBP9 transfected HepG2 cells.



Immunohistochemical analysis of paraffin-embedded human liver cancer tissue slide using 16371-1-AP (GTPBP9 antibody) at dilution of 1:200 (under 10x lens). Heat mediated antigen retrieval with Tris-EDTA buffer (pH 9.0).



Immunohistochemical analysis of paraffin-embedded human liver cancer tissue slide using 16371-1-AP (GTPBP9 antibody) at dilution of 1:200 (under 40x lens). Heat mediated antigen retrieval with Tris-EDTA buffer (pH 9.0).



Immunofluorescent analysis of (-20°C Ethanol) fixed MCF-7 cells using 16371-1-AP (GTPBP9 antibody) at dilution of 1:200 and Alexa Fluor 488-Conjugated Goat Anti-Rabbit IgG(H+L).