

For Research Use Only

GMPS Polyclonal antibody

Catalog Number: 16376-1-AP **7 Publications**



Basic Information

Catalog Number:

16376-1-AP

Size:

150ul , Concentration: 450 ug/ml by Nanodrop and 340 ug/ml by Bradford method using BSA as the standard;

Source:

Rabbit

Isotype:

IgG

Immunogen Catalog Number:

AG9350

GenBank Accession Number:

BC012178

GeneID (NCBI):

8833

UNIPROT ID:

P49915

Full Name:

guanine monphosphate synthetase

Calculated MW:

693 aa, 77 kDa

Observed MW:

67 kDa

Purification Method:

Antigen affinity purification

Recommended Dilutions:

WB 1:500-1:3000

IP 0.5-4.0 ug for 1.0-3.0 mg of total protein lysate

IHC 1:50-1:500

Applications

Tested Applications:

WB, IP, IHC, ELISA

Cited Applications:

WB, IHC

Species Specificity:

human, mouse, rat

Cited Species:

human, mouse

Note-IHC: suggested antigen retrieval with TE buffer pH 9.0; (*) Alternatively, antigen retrieval may be performed with citrate buffer pH 6.0

Positive Controls:

WB : HeLa cells, HL-60 cells, Jurkat cells, mouse brain tissue, mouse testis tissue

IP : HeLa cells,

IHC : human liver cancer tissue,

Notable Publications

Author	Pubmed ID	Journal	Application
Jing Wang	34520390	Aging (Albany NY)	WB
Yajing Lv	33186350	PLoS Biol	WB, IHC
Eunus S Ali	32485148	Mol Cell	WB

Storage

Storage:

Store at -20°C. Stable for one year after shipment.

Storage Buffer:

PBS with 0.02% sodium azide and 50% glycerol pH 7.3.

Aliquoting is unnecessary for -20°C storage

*** 20ul sizes contain 0.1% BSA

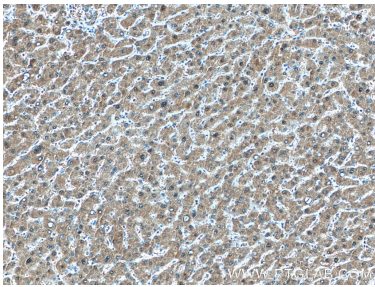
For technical support and original validation data for this product please contact:

T: 1 (888) 4PTGLAB (1-888-478-4522) (toll free in USA), or 1(312) 455-8498 (outside USA)

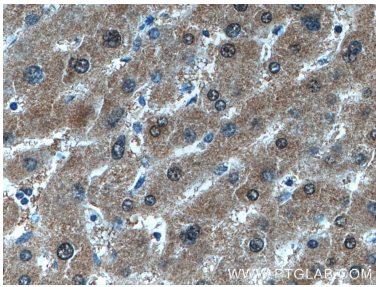
E: proteintech@ptglab.com
W: ptglab.com

This product is exclusively available under Proteintech Group brand and is not available to purchase from any other manufacturer.

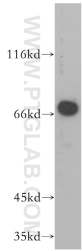
Selected Validation Data



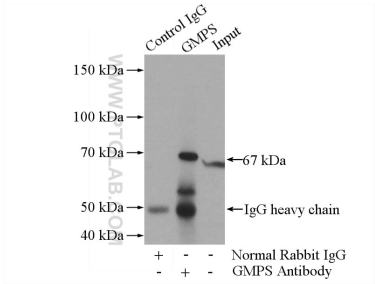
Immunohistochemical analysis of paraffin-embedded human liver cancer tissue slide using 16376-1-AP (GMPS antibody) at dilution of 1:100 (under 10x lens).



Immunohistochemical analysis of paraffin-embedded human liver cancer tissue slide using 16376-1-AP (GMPS antibody) at dilution of 1:100 (under 40x lens).



HeLa cells were subjected to SDS PAGE followed by western blot with 16376-1-AP (GMPS antibody) at dilution of 1:800 incubated at room temperature for 1.5 hours.



IP result of anti-GMPS (IP:16376-1-AP, 4ug; Detection:16376-1-AP 1:800) with HeLa cells lysate 1080ug.