

For Research Use Only

MRPS28 Polyclonal antibody

Catalog Number: 16378-1-AP

1 Publications



Basic Information

Catalog Number: 16378-1-AP	GenBank Accession Number: BC010150	Purification Method: Antigen affinity purification
Size: 150ul , Concentration: 550 ug/ml by Nanodrop and 300 ug/ml by Bradford method using BSA as the standard;	GeneID (NCBI): 28957	Recommended Dilutions: WB 1:1000-1:4000
Source: Rabbit	UNIPROT ID: Q9Y2Q9	IHC 1:500-1:2000
Isotype: IgG	Full Name: mitochondrial ribosomal protein S28	IF/ICC 1:50-1:500
Immunogen Catalog Number: AG9354	Calculated MW: 187 aa, 21 kDa	
	Observed MW: 21 kDa	

Applications

Tested Applications: WB, IHC, IF/ICC, ELISA	Positive Controls: WB : COLO 320 cells,
Cited Applications: WB	IHC : human liver tissue,
Species Specificity: human, mouse, rat	IF/ICC : HeLa cells,
Cited Species: human	
Note-IHC: suggested antigen retrieval with TE buffer pH 9.0; (*) Alternatively, antigen retrieval may be performed with citrate buffer pH 6.0	

Notable Publications

Author	Pubmed ID	Journal	Application
Juliette Pulman	30566640	Hum Mol Genet	WB

Storage

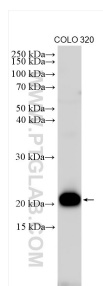
Storage:
Store at -20°C. Stable for one year after shipment.
Storage Buffer:
PBS with 0.02% sodium azide and 50% glycerol pH 7.3.
Aliquoting is unnecessary for -20°C storage

*** 20ul sizes contain 0.1% BSA

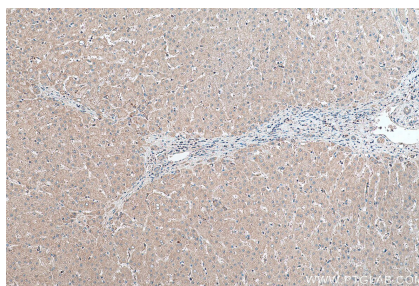
For technical support and original validation data for this product please contact:
T: 1 (888) 4PTGLAB (1-888-478-4522) (toll free in USA), or 1(312) 455-8498 (outside USA)
E: proteintech@ptglab.com
W: ptglab.com

This product is exclusively available under Proteintech Group brand and is not available to purchase from any other manufacturer.

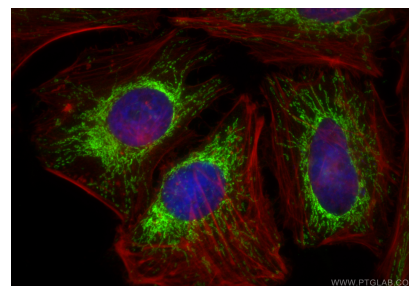
Selected Validation Data



COLO 320 cells were subjected to SDS PAGE followed by western blot with 16378-1-AP (MRPS28 antibody) at dilution of 1:2000 incubated at room temperature for 1.5 hours.



Immunohistochemical analysis of paraffin-embedded human liver tissue slide using 16378-1-AP (MRPS28 antibody) at dilution of 1:1000 (under 10x lens). Heat mediated antigen retrieval with Tris-EDTA buffer (pH 9.0).



Immunofluorescent analysis of (4% PFA) fixed HeLa cells using MRPS28 antibody (16378-1-AP) at dilution of 1:200 and CoraLite®488-Conjugated Goat Anti-Rabbit IgG(H+L) (SA00013-2), CL594-Phalloidin (red).