

For Research Use Only

RPL23A Polyclonal antibody

Catalog Number: 16386-1-AP

7 Publications



Basic Information

Catalog Number:

16386-1-AP

Size:

150ul, Concentration: 400 ug/ml by Nanodrop;

Source:

Rabbit

Isotype:

IgG

Immunogen Catalog Number:

AG9424

GenBank Accession Number:

BC014459

GeneID (NCBI):

6147

UNIPROT ID:

P62750

Full Name:

ribosomal protein L23a

Calculated MW:

156 aa, 18 kDa

Observed MW:

18-23 kDa

Purification Method:

Antigen affinity purification

Recommended Dilutions:

WB 1:2000-1:12000

IP 0.5-4.0 ug for 1.0-3.0 mg of total protein lysate

IHC 1:600-1:2400

IF/ICC 1:20-1:200

Applications

Tested Applications:

WB, IHC, IF/ICC, IP, ELISA

Cited Applications:

WB, RIP

Species Specificity:

human, mouse, rat

Cited Species:

human, mouse

Note-IHC: suggested antigen retrieval with TE buffer pH 9.0; (*) Alternatively, antigen retrieval may be performed with citrate buffer pH 6.0

Positive Controls:

WB : HeLa cells, HepG2 cells, human liver tissue, human heart tissue, mouse liver tissue, rat liver tissue

IP : HepG2 cells,

IHC : human normal colon,

IF/ICC : HepG2 cells,

Notable Publications

Author	Pubmed ID	Journal	Application
Janja Božič	34534264	Brain	WB
Mehdi Pirouz	32457326	Nat Commun	WB, RIP
Trieu-Duc Vu	35504437	Gene	WB

Storage

Storage:

Store at -20°C. Stable for one year after shipment.

Storage Buffer:

PBS with 0.02% sodium azide and 50% glycerol pH 7.3.

Aliquoting is unnecessary for -20°C storage

*** 20ul sizes contain 0.1% BSA

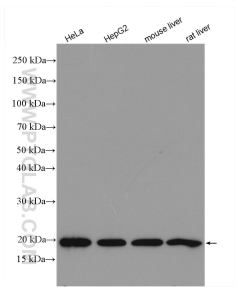
For technical support and original validation data for this product please contact:

T: 1 (888) 4PTGLAB (1-888-478-4522) (toll free in USA), or 1(312) 455-8498 (outside USA)

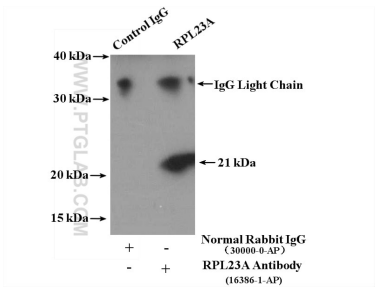
E: proteintech@ptglab.com
W: ptglab.com

This product is exclusively available under Proteintech Group brand and is not available to purchase from any other manufacturer.

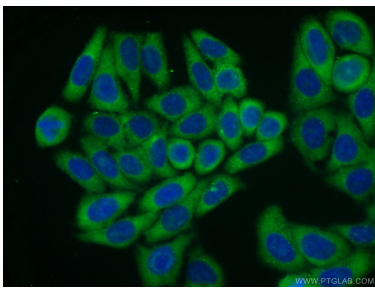
Selected Validation Data



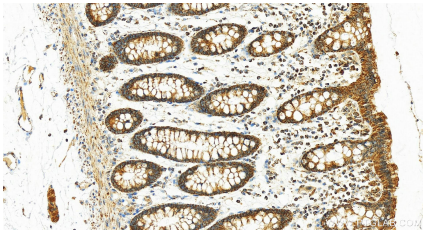
Various lysates were subjected to SDS PAGE followed by western blot with 16386-1-AP (RPL23A antibody) at dilution of 1:6000 incubated at room temperature for 1.5 hours.



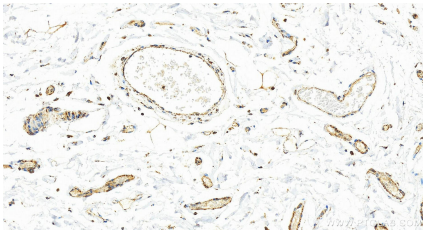
IP result of anti-RPL23A (IP:16386-1-AP, 4ug; Detection:16386-1-AP 1:500) with HepG2 cells lysate 3200ug.



Immunofluorescent analysis of HepG2 cells using 16386-1-AP (RPL23A antibody) at dilution of 1:50 and Alexa Fluor 488-conjugated Goat Anti-Rabbit IgG(H+L).



Immunohistochemical analysis of paraffin-embedded human normal colon slide using 16386-1-AP (RPL23A antibody) at dilution of 1:1200 (under 20x lens). Heat mediated antigen retrieval with Tris-EDTA buffer (pH 9.0).



Immunohistochemical analysis of paraffin-embedded human normal colon slide using 16386-1-AP (RPL23A antibody) at dilution of 1:1200 (under 20x lens). Heat mediated antigen retrieval with Tris-EDTA buffer (pH 9.0).