

For Research Use Only

# RIN1 Polyclonal antibody

Catalog Number: 16388-1-AP **2 Publications**



## Basic Information

**Catalog Number:**

16388-1-AP

**Size:**

150ul , Concentration: 250 ug/ml by Nanodrop and 213 ug/ml by Bradford method using BSA as the standard;

**Source:**

Rabbit

**Isotype:**

IgG

**Immunogen Catalog Number:**

AG9451

**GenBank Accession Number:**

BC014417

**GeneID (NCBI):**

9610

**UNIPROT ID:**

Q13671

**Full Name:**

Ras and Rab interactor 1

**Calculated MW:**

783 aa, 84 kDa

**Observed MW:**

90 kDa

**Purification Method:**

Antigen affinity purification

**Recommended Dilutions:**

WB 1:500-1:2000

IP 0.5-4.0 ug for 1.0-3.0 mg of total protein lysate

IF/ICC 1:50-1:500

## Applications

**Tested Applications:**

WB, IF/ICC, IP, ELISA

**Cited Applications:**

WB, IF

**Species Specificity:**

human, mouse, rat

**Cited Species:**

human

**Positive Controls:**

WB : HeLa cells,

IP : HeLa cells,

IF/ICC : HeLa cells,

## Notable Publications

Author	Pubmed ID	Journal	Application
Jing Zhang	33335690	Comput Struct Biotechnol J	WB
Xiaowei Sun	35799301	Cell Commun Signal	IF

## Storage

**Storage:**

Store at -20°C. Stable for one year after shipment.

**Storage Buffer:**

PBS with 0.02% sodium azide and 50% glycerol pH 7.3.

Aliquoting is unnecessary for -20°C storage

**\*\*\* 20ul sizes contain 0.1% BSA**

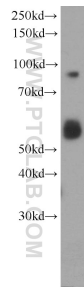
For technical support and original validation data for this product please contact:

T: 1 (888) 4PTGLAB (1-888-478-4522) (toll free in USA), or 1(312) 455-8498 (outside USA)

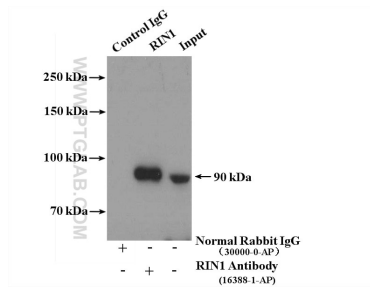
E: [proteintech@ptglab.com](mailto:proteintech@ptglab.com)  
W: [ptglab.com](http://ptglab.com)

**This product is exclusively available under Proteintech Group brand and is not available to purchase from any other manufacturer.**

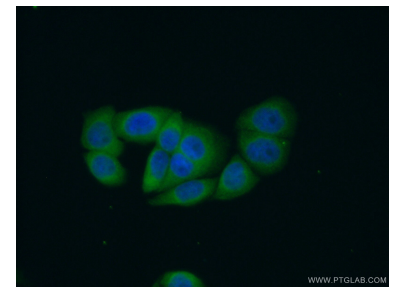
## Selected Validation Data



HeLa cells were subjected to SDS PAGE followed by western blot with 16388-1-AP (RIN1 antibody) at dilution of 1:1000 incubated at room temperature for 1.5 hours.



IP result of anti-RIN1 (IP:16388-1-AP, 4ug; Detection:16388-1-AP 1:500) with HeLa cells lysate 3400ug.



Immunofluorescent analysis of (10% Formaldehyde) fixed HeLa cells using 16388-1-AP (RIN1 antibody) at dilution of 1:50 and Alexa Fluor 488-conjugated Goat Anti-Rabbit IgG(H+L).