

For Research Use Only

BANP Polyclonal antibody

Catalog Number: 16393-1-AP **2 Publications**



Basic Information

Catalog Number: 16393-1-AP	GenBank Accession Number: BC009424	Purification Method: Antigen affinity purification
Size: 150ul , Concentration: 400 µg/ml by Nanodrop and 233 µg/ml by Bradford method using BSA as the standard;	GeneID (NCBI): 54971	Recommended Dilutions: WB 1:500-1:1000 IHC 1:50-1:500
Source: Rabbit	Full Name: BTG3 associated nuclear protein	
Isotype: IgG	Calculated MW: 545 aa, 59 kDa	
Immunogen Catalog Number: AG9484	Observed MW: 56 kDa	

Applications

Tested Applications: IHC, WB, ELISA	Positive Controls: WB : human kidney tissue, human placenta tissue IHC : human lung cancer tissue,
Cited Applications: IHC, WB	
Species Specificity: human	
Cited Species: human, mouse	

Note-IHC: suggested antigen retrieval with TE buffer pH 9.0; (*) Alternatively, antigen retrieval may be performed with citrate buffer pH 6.0

Background Information

Notable Publications

Author	Pubmed ID	Journal	Application
Chunhui Huang	33929499	Hum Mol Genet	WB
Hua-Chuan Zheng	28407690	Oncotarget	WB,IHC

Storage

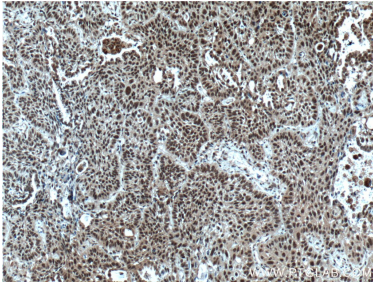
Storage:
Store at -20°C. Stable for one year after shipment.
Storage Buffer:
PBS with 0.02% sodium azide and 50% glycerol pH 7.3.
Aliquoting is unnecessary for -20°C storage

***** 20ul sizes contain 0.1% BSA**

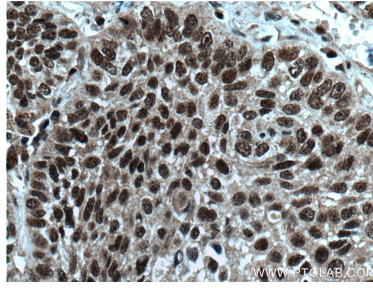
For technical support and original validation data for this product please contact:
T: 1 (888) 4PTGLAB (1-888-478-4522) (toll free in USA), or 1(312) 455-8498 (outside USA)
E: proteintech@ptglab.com
W: ptglab.com

This product is exclusively available under Proteintech Group brand and is not available to purchase from any other manufacturer.

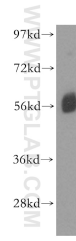
Selected Validation Data



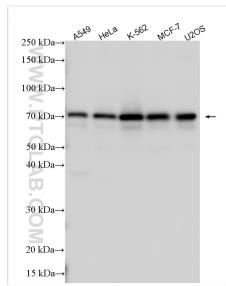
Immunohistochemical analysis of paraffin-embedded human lung cancer tissue slide using 16393-1-AP (BANP antibody) at dilution of 1:200 (under 10x lens. Heat mediated antigen retrieval with Tris-EDTA buffer (pH 9.0)).



Immunohistochemical analysis of paraffin-embedded human lung cancer tissue slide using 16393-1-AP (BANP antibody) at dilution of 1:200 (under 40x lens. Heat mediated antigen retrieval with Tris-EDTA buffer (pH 9.0)).



human kidney tissue were subjected to SDS PAGE followed by western blot with 16393-1-AP (BANP antibody) at dilution of 1:500 incubated at room temperature for 1.5 hours.



Various lysates were subjected to SDS PAGE followed by western blot with 16393-1-AP (BANP antibody) at dilution of 1:1000 incubated at room temperature for 1.5 hours.