

For Research Use Only

MRPL44 Polyclonal antibody

Catalog Number: 16394-1-AP **35 Publications**



Basic Information

Catalog Number: 16394-1-AP	GenBank Accession Number: BC012058	Purification Method: Antigen affinity purification
Size: 150ul , Concentration: 400 µg/ml by Nanodrop and 267 µg/ml by Bradford method using BSA as the standard;	GeneID (NCBI): 65080	Recommended Dilutions: WB 1:5000-1:50000 IHC 1:20-1:200
Source: Rabbit	Full Name: mitochondrial ribosomal protein L44	
Isotype: IgG	Calculated MW: 332 aa, 38 kDa	
Immunogen Catalog Number: AG9485	Observed MW: 38 kDa	

Applications

Tested Applications: IHC, WB, ELISA	Positive Controls:
Cited Applications: IP, WB	WB : A549 cells, rat brain tissue, HeLa cells, Jurkat cells, K-562 cells
Species Specificity: human, mouse, rat	IHC : human ovary tumor tissue,
Cited Species: human, mouse, monkey	
Note-IHC: suggested antigen retrieval with TE buffer pH 9.0; (*) Alternatively, antigen retrieval may be performed with citrate buffer pH 6.0	

Background Information

Mammalian mitochondrial ribosomal proteins are encoded by nuclear genes and help in protein synthesis within the mitochondrion. Mitochondrial ribosomes (mitoribosomes) consist of a small 28S subunit and a large 39S subunit. MRP-L44 (mitochondrial ribosomal protein L44) is a 332 amino acid protein that localizes to the mitochondrion, where it exists as a component of the 39S ribosomal subunit and works in conjunction with other MRPs to mediate protein synthesis.

Notable Publications

Author	Pubmed ID	Journal	Application
Ying Shu	36314841	EMBO J	WB,IP
Uwe Richter	26504172	J Cell Biol	WB
Christopher B Jackson	30358850	Hum Mol Genet	WB

Storage

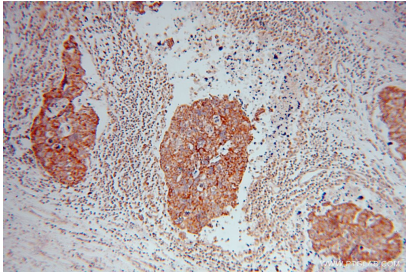
Storage:
Store at -20°C. Stable for one year after shipment.
Storage Buffer:
PBS with 0.02% sodium azide and 50% glycerol pH 7.3.
Aliquoting is unnecessary for -20°C storage

*** 20ul sizes contain 0.1% BSA

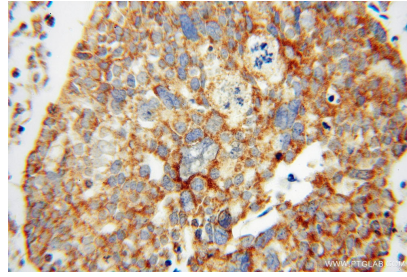
For technical support and original validation data for this product please contact:
T: 1 (888) 4PTGLAB (1-888-478-4522) (toll free in USA), or 1(312) 455-8498 (outside USA) E: proteintech@ptglab.com W: ptglab.com

This product is exclusively available under Proteintech Group brand and is not available to purchase from any other manufacturer.

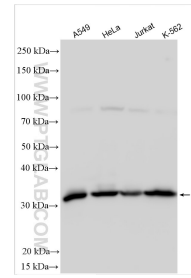
Selected Validation Data



Immunohistochemical analysis of paraffin-embedded human ovary tumor using 16394-1-AP (MRPL44 antibody) at dilution of 1:50 (under 10x lens).



Immunohistochemical analysis of paraffin-embedded human ovary tumor using 16394-1-AP (MRPL44 antibody) at dilution of 1:50 (under 40x lens).



Various lysates were subjected to SDS PAGE followed by western blot with 16394-1-AP (MRPL44 antibody) at dilution of 1:30000 incubated at room temperature for 1.5 hours.