

# SNCG Polyclonal antibody

Catalog Number: 16398-1-AP

## Basic Information

<b>Catalog Number:</b> 16398-1-AP	<b>GenBank Accession Number:</b> BC014098	<b>Purification Method:</b> Antigen affinity purification
<b>Size:</b> 150ul , Concentration: 1000 µg/ml by Nanodrop;	<b>GeneID (NCBI):</b> 6623	<b>Recommended Dilutions:</b> WB 1:500-1:1000 IHC 1:50-1:500
<b>Source:</b> Rabbit	<b>Full Name:</b> synuclein, gamma (breast cancer-specific protein 1)	
<b>Isotype:</b> IgG	<b>Calculated MW:</b> 127 aa, 13 kDa	
<b>Immunogen Catalog Number:</b> AG9493	<b>Observed MW:</b> 13 kDa	

## Applications

<b>Tested Applications:</b> IHC, WB, ELISA	<b>Positive Controls:</b>
<b>Species Specificity:</b> human, mouse	<b>WB :</b> HT-29 cells, HeLa cells <b>IHC :</b> mouse brain tissue,

**Note-IHC:** suggested antigen retrieval with **TE buffer pH 9.0; (\*) Alternatively, antigen retrieval may be performed with citrate buffer pH 6.0**

## Background Information

Gamma synuclein, also known as SNCG, BCSG1, belongs to the synuclein family. SNCG is a synuclein protein found primarily in the peripheral nervous system and retina (PMID 11806835). SNCG is the least conserved of the synuclein proteins and is detected in the brain, ovarian tumors, and the olfactory epithelium (PMID 9750188). SNCG is expressed in high abundance in breast cancer but scarcely at all in a normal breast and is considered a breast cancer marker (PMID: 10813729).

## Storage

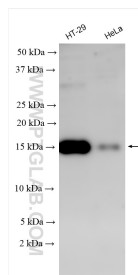
**Storage:**  
Store at -20°C. Stable for one year after shipment.  
**Storage Buffer:**  
PBS with 0.02% sodium azide and 50% glycerol pH 7.3.  
Aliquoting is unnecessary for -20°C storage

\*\*\* 20ul sizes contain 0.1% BSA

For technical support and original validation data for this product please contact:  
T: 1 (888) 4PTGLAB (1-888-478-4522) (toll free in USA), or 1(312) 455-8498 (outside USA)  
E: [proteintech@ptglab.com](mailto:proteintech@ptglab.com)  
W: [ptglab.com](http://ptglab.com)

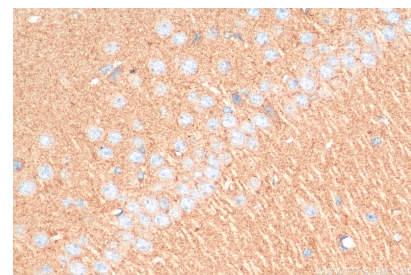
This product is exclusively available under Proteintech Group brand and is not available to purchase from any other manufacturer.

## Selected Validation Data



Various lysates were subjected to SDS PAGE followed by western blot with 16398-1-AP (SNCG antibody) at dilution of 1:800 incubated at room temperature for 1.5 hours.

Immunohistochemical analysis of paraffin-embedded mouse brain tissue slide using 16398-1-AP (SNCG antibody) at dilution of 1:200 (under 10x lens). Heat mediated antigen retrieval with Tris-EDTA buffer (pH 9.0).



Immunohistochemical analysis of paraffin-embedded mouse brain tissue slide using 16398-1-AP (SNCG antibody) at dilution of 1:200 (under 40x lens). Heat mediated antigen retrieval with Tris-EDTA buffer (pH 9.0).