

For Research Use Only

# YIF1B Polyclonal antibody

Catalog Number: 16406-1-AP



## Basic Information

### Catalog Number:

16406-1-AP

### Size:

150ul , Concentration: 700 ug/ml by Nanodrop;

### Source:

Rabbit

### Isotype:

IgG

### Immunogen Catalog Number:

AG9538

### GenBank Accession Number:

BC014974

### GeneID (NCBI):

90522

### UNIPROT ID:

Q5BJH7

### Full Name:

Yip1 interacting factor homolog B (S. cerevisiae)

### Calculated MW:

294 aa, 32 kDa

### Observed MW:

31-34 kDa

### Purification Method:

Antigen affinity purification

### Recommended Dilutions:

WB 1:1000-1:6000

## Applications

### Tested Applications:

WB, ELISA

### Species Specificity:

human, mouse, rat

### Positive Controls:

WB : SK-N-SH cells, mouse brain tissue, rat brain tissue

## Background Information

YIF1B is an intracellular membrane-bound protein belonging to the Yip family, a trafficking protein orthologue of YIF1P that was initially identified in *Saccharomyces cerevisiae* as interacting with YIP1P and essential for secretion. YIF1B is expressed in various tissues, especially in brain neurons (PMID: 33103737). YIF1B is localized in the intermediate compartment between the endoplasmic reticulum (ER) and the Golgi apparatus (PMID: 26077767). Western blot analysis detected YIF1B at an apparent molecular mass of 31 kDa.

## Storage

### Storage:

Store at -20°C. Stable for one year after shipment.

### Storage Buffer:

PBS with 0.02% sodium azide and 50% glycerol pH 7.3.

Aliquoting is unnecessary for -20°C storage

\*\*\* 20ul sizes contain 0.1% BSA

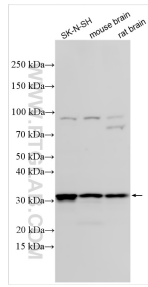
For technical support and original validation data for this product please contact:

T: 1 (888) 4PTGLAB (1-888-478-4522) (toll free in USA), or 1(312) 455-8498 (outside USA)

E: [proteintech@ptglab.com](mailto:proteintech@ptglab.com)  
W: [ptglab.com](http://ptglab.com)

This product is exclusively available under Proteintech Group brand and is not available to purchase from any other manufacturer.

## Selected Validation Data



Various lysates were subjected to SDS PAGE followed by western blot with 16406-1-AP (YIF1B antibody) at dilution of 1:3000 incubated at room temperature for 1.5 hours.