

For Research Use Only

YIF1B Polyclonal antibody, PBS Only

Catalog Number: 16406-1-PBS



Basic Information

Catalog Number: 16406-1-PBS	GenBank Accession Number: BC014974	Purification Method: Antigen affinity purification
Size: 100ug , Concentration: 1 mg/ml by Nanodrop;	GeneID (NCBI): 90522	
Source: Rabbit	UNIPROT ID: Q5BJH7	
Isotype: IgG	Full Name: Yip1 interacting factor homolog B (S. cerevisiae)	
Immunogen Catalog Number: AG9538	Calculated MW: 294 aa, 32 kDa	
	Observed MW: 31-34 kDa	

Applications

Tested Applications:
WB, Indirect ELISA

Species Specificity:
human, mouse, rat

Background Information

YIF1B is an intracellular membrane-bound protein belonging to the Yip family, a trafficking protein orthologue of YIF1P that was initially identified in *Saccharomyces cerevisiae* as interacting with YIP1P and essential for secretion. YIF1B is expressed in various tissues, especially in brain neurons (PMID: 33103737). YIF1B is localized in the intermediate compartment between the endoplasmic reticulum (ER) and the Golgi apparatus (PMID: 26077767). Western blot analysis detected YIF1B at an apparent molecular mass of 31 kDa.

Storage

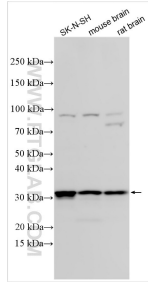
Storage:
Store at -80°C.

Storage Buffer:
PBS Only

For technical support and original validation data for this product please contact:
T: 1 (888) 4PTGLAB (1-888-478-4522) (toll free in USA), or 1(312) 455-8498 (outside USA) E: proteintech@ptglab.com
W: ptglab.com

This product is exclusively available under Proteintech Group brand and is not available to purchase from any other manufacturer.

Selected Validation Data



Various lysates were subjected to SDS PAGE followed by western blot with 16406-1-AP (Y1F1B antibody) at dilution of 1:3000 incubated at room temperature for 1.5 hours. This data was developed using the same antibody clone with 16406-1-PBS in a different storage buffer formulation.