

For Research Use Only

SMCR7/MID49 Polyclonal antibody

Catalog Number: 16413-1-AP

Featured Product

54 Publications



Basic Information

Catalog Number:

16413-1-AP

Size:

150ul, Concentration: 300 µg/ml by Nanodrop and 233 µg/ml by Bradford method using BSA as the standard;

Source:

Rabbit

Isotype:

IgG

Immunogen Catalog Number:

AG9531

GenBank Accession Number:

BC014973

GeneID (NCBI):

125170

UNIPROT ID:

Q96C03

Full Name:

Smith-Magenis syndrome chromosome region, candidate 7

Calculated MW:

454 aa, 49 kDa

Observed MW:

49 kDa

Purification Method:

Antigen affinity purification

Recommended Dilutions:

WB 1:500-1:1000

IHC 1:20-1:200

Applications

Tested Applications:

WB, IHC, ELISA

Cited Applications:

WB, IHC, IF

Species Specificity:

human, mouse

Cited Species:

human, mouse, rat, monkey

Positive Controls:

WB : HEK-293T cells, HepG2 cells, HT-1080 cells

IHC : human liver cancer tissue, human skeletal muscle tissue

Note-IHC: suggested antigen retrieval with TE buffer pH 9.0; (*) Alternatively, antigen retrieval may be performed with citrate buffer pH 6.0

Background Information

SMCR7, also named as MID49, is a 49 kDa mitochondrial outer membrane protein which regulates mitochondrial morphology. SMCR7 can directly recruit the fission mediator dynamin-related protein 1 (DNM1L) to the mitochondrial surface. SMCR7 has two isoforms.

Notable Publications

Author	Pubmed ID	Journal	Application
Allan Shuai Huang	36171332	Cell Death Differ	WB
William T King	34529976	J Biol Chem	WB
Dandan Liu	36083519	Mol Neurobiol	WB

Storage

Storage:

Store at -20°C. Stable for one year after shipment.

Storage Buffer:

PBS with 0.02% sodium azide and 50% glycerol pH 7.3.

Aliquoting is unnecessary for -20°C storage

*** 20ul sizes contain 0.1% BSA

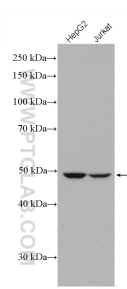
For technical support and original validation data for this product please contact:

T: 1 (888) 4PTGLAB (1-888-478-4522) (toll free in USA), or 1(312) 455-8498 (outside USA)

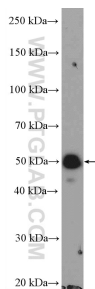
E: proteintech@ptglab.com
W: ptglab.com

This product is exclusively available under Proteintech Group brand and is not available to purchase from any other manufacturer.

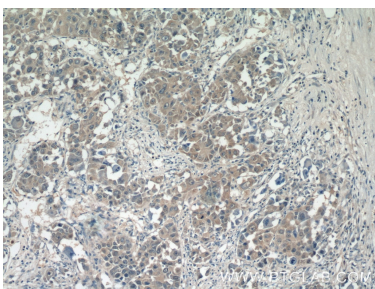
Selected Validation Data



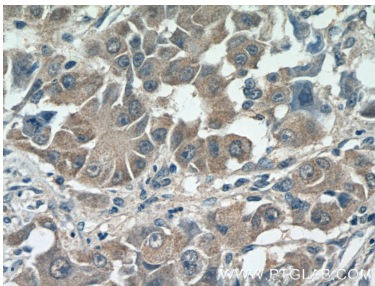
Various lysates were subjected to SDS PAGE followed by western blot with 16413-1-AP (SMCR7/MiD49 antibody) at dilution of 1:1000 incubated at room temperature for 1.5 hours.



HEK-293T cells were subjected to SDS PAGE followed by western blot with 16413-1-AP (SMCR7/MiD49 antibody at dilution of 1:600 incubated at room temperature for 1.5 hours.



Immunohistochemical analysis of paraffin-embedded human liver cancer tissue slide using 16413-1-AP (SMCR7/MiD49 antibody at dilution of 1:50 (under 10x lens).



Immunohistochemical analysis of paraffin-embedded human liver cancer tissue slide using 16413-1-AP (SMCR7/MiD49 antibody at dilution of 1:50 (under 40x lens).