

For Research Use Only

NELFB Polyclonal antibody

Catalog Number: 16418-1-AP

Featured Product

6 Publications



Basic Information

Catalog Number:

16418-1-AP

Size:

150ul, Concentration: 500 ug/ml by Nanodrop and 340 ug/ml by Bradford method using BSA as the standard;

Source:

Rabbit

Isotype:

IgG

Immunogen Catalog Number:

AG9599

GenBank Accession Number:

BC011892

GeneID (NCBI):

25920

UNIPROT ID:

Q8WX92

Full Name:

cofactor of BRCA1

Calculated MW:

580aa, 66 kDa; 475aa, 54 kDa

Observed MW:

66 kDa

Purification Method:

Antigen affinity purification

Recommended Dilutions:

WB 1:1000-1:6000

IP 0.5-4.0 ug for 1.0-3.0 mg of total protein lysate

IHC 1:200-1:1000

IF/ICC 1:10-1:100

Applications

Tested Applications:

WB, IHC, IF/ICC, IP, ELISA

Cited Applications:

WB, IHC, IF

Species Specificity:

human, mouse, rat

Cited Species:

human, mouse

Note-IHC: suggested antigen retrieval with TE buffer pH 9.0; (*) Alternatively, antigen retrieval may be performed with citrate buffer pH 6.0

Positive Controls:

WB: BxPC-3 cells, HeLa cells, HepG2 cells, MCF-7 cells, rat brain tissue

IP: mouse brain tissue,

IHC: human urothelial carcinoma tissue,

IF/ICC: BxPC-3 cells,

Background Information

Cofactor of BRCA1 (COBRA1) was first identified as a BRCA1-interacting protein and subsequently found to be the B subunit of the negative elongation factor complex (NELF-B). Cobra1 is essential for early embryogenesis (PMID: 19340312). The MW of this protein is 66 kDa, and this antibody specially recognises the 66 kDa protein.

Notable Publications

Author	Pubmed ID	Journal	Application
Bofeng Liu	33116310	Nature	IF
Alessia Curina	28275002	Genes Dev	WB
Seina Ohe	36463234	Nat Commun	WB

Storage

Storage:

Store at -20°C. Stable for one year after shipment.

Storage Buffer:

PBS with 0.02% sodium azide and 50% glycerol pH 7.3.

Aliquoting is unnecessary for -20°C storage

*** 20ul sizes contain 0.1% BSA

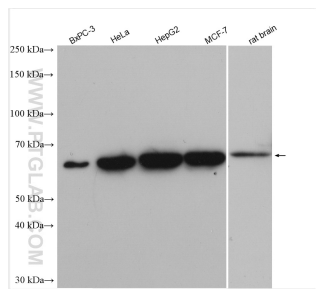
For technical support and original validation data for this product please contact:

T: 1 (888) 4PTGLAB (1-888-478-4522) (toll free in USA), or 1(312) 455-8498 (outside USA)

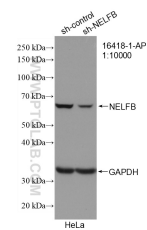
E: proteintech@ptglab.com
W: ptglab.com

This product is exclusively available under Proteintech Group brand and is not available to purchase from any other manufacturer.

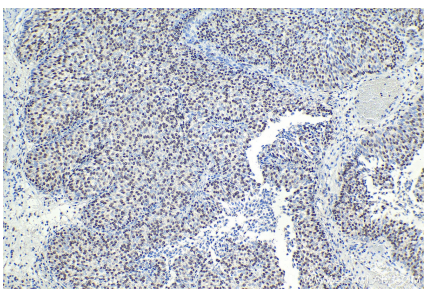
Selected Validation Data



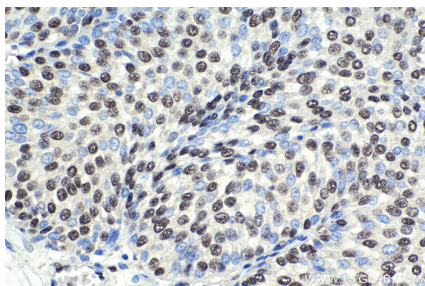
Various lysates were subjected to SDS PAGE followed by western blot with 16418-1-AP (NELFB antibody) at dilution of 1:3000 incubated at room temperature for 1.5 hours.



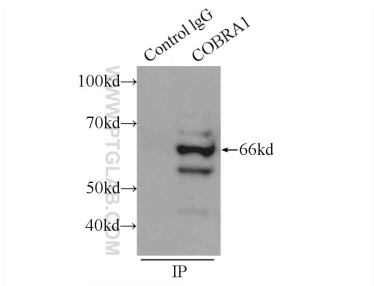
WB result of NELFB antibody (16418-1-AP; 1:10000; incubated at room temperature for 1.5 hours) with sh-Control and sh-NELFB transfected HeLa cells.



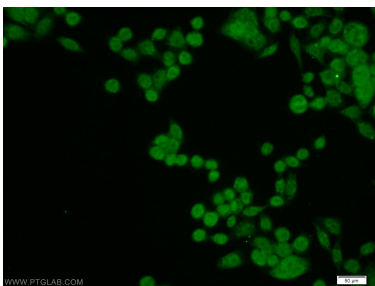
Immunohistochemical analysis of paraffin-embedded human urothelial carcinoma tissue slide using 16418-1-AP (NELFB antibody) at dilution of 1:1000 (under 10x lens). Heat mediated antigen retrieval with Tris-EDTA buffer (pH 9.0).



Immunohistochemical analysis of paraffin-embedded human urothelial carcinoma tissue slide using 16418-1-AP (NELFB antibody) at dilution of 1:1000 (under 40x lens). Heat mediated antigen retrieval with Tris-EDTA buffer (pH 9.0).



IP result of anti-NELFB (IP:16418-1-AP, 3ug; Detection:16418-1-AP 1:500) with mouse brain tissue lysate 6000ug.



Immunofluorescent analysis of BxPC-3 cells using 16418-1-AP (NELFB antibody) at dilution of 1:25 and Alexa Fluor 488-conjugated Goat Anti-Rabbit IgG(H+L).