

For Research Use Only

NLE1 Polyclonal antibody

Catalog Number: 16419-1-AP



Basic Information

| | | |
|--|---|--|
| Catalog Number: 16419-1-AP | GenBank Accession Number: BC012075 | Purification Method: Antigen affinity purification |
| Size: 150ul , Concentration: 500 µg/ml by Nanodrop and 320 µg/ml by Bradford method using BSA as the standard; | GeneID (NCBI): 54475 | Recommended Dilutions: WB 1:200-1:1000 |
| Source: Rabbit | Full Name: notchless homolog 1 (Drosophila) | |
| Isotype: IgG | Calculated MW: 485 aa, 53 kDa | |
| Immunogen Catalog Number: AG9604 | Observed MW: 45-55 kDa | |

Applications

| | |
|--|---|
| Tested Applications: WB,ELISA | Positive Controls: WB : BxPC-3 cells, |
| Species Specificity: human, mouse, rat | |

Background Information

Storage

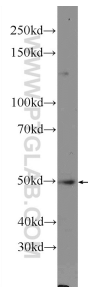
Storage:
Store at -20°C. Stable for one year after shipment.
Storage Buffer:
PBS with 0.02% sodium azide and 50% glycerol pH 7.3.
Aliquoting is unnecessary for -20°C storage

*** 20ul sizes contain 0.1% BSA

For technical support and original validation data for this product please contact:
T: 1 (888) 4PTGLAB (1-888-478-4522) (toll free in USA), or 1(312) 455-8498 (outside USA) E: proteintech@ptglab.com
W: ptglab.com

This product is exclusively available under Proteintech Group brand and is not available to purchase from any other manufacturer.

Selected Validation Data



BxPC-3 cells were subjected to SDS PAGE followed by western blot with 16419-1-AP (NLE1 Antibody) at dilution of 1:300 incubated at room temperature for 1.5 hours.