

For Research Use Only

CHMP7 Polyclonal antibody

Catalog Number: 16424-1-AP

Featured Product

13 Publications



Basic Information

Catalog Number:

16424-1-AP

Size:

150ul, Concentration: 500 ug/ml by Nanodrop;

Source:

Rabbit

Isotype:

IgG

Immunogen Catalog Number:

AG9625

GenBank Accession Number:

BC019110

GeneID (NCBI):

91782

UNIPROT ID:

Q8WUX9

Full Name:

CHMP family, member 7

Calculated MW:

453 aa, 51 kDa

Observed MW:

51-55 kDa

Purification Method:

Antigen affinity purification

Recommended Dilutions:

WB 1:2000-1:16000

IHC 1:50-1:500

IF/ICC 1:200-1:800

Applications

Tested Applications:

WB, IHC, IF/ICC, ELISA

Cited Applications:

WB, IHC, IF, IP, CoIP

Species Specificity:

human, mouse, rat

Cited Species:

human, pig

Note-IHC: suggested antigen retrieval with TE buffer pH 9.0; (*) Alternatively, antigen retrieval may be performed with citrate buffer pH 6.0

Positive Controls:

WB : HEK-293 cells, HEK-293T cells, mouse spinal cord tissue, rat spinal cord tissue, HeLa cells, Jurkat cells

IHC : human kidney tissue, human colon cancer tissue

IF/ICC : A431 cells,

Notable Publications

Author	Pubmed ID	Journal	Application
Yolanda Olmos	27618263	Curr Biol	WB
Samuel S Wallis	34818527	Dev Cell	WB
Charles T Halfmann	31147383	J Cell Biol	WB

Storage

Storage:

Store at -20°C. Stable for one year after shipment.

Storage Buffer:

PBS with 0.02% sodium azide and 50% glycerol pH 7.3.

Aliquoting is unnecessary for -20°C storage

*** 20ul sizes contain 0.1% BSA

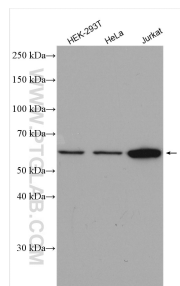
For technical support and original validation data for this product please contact:

T: 1 (888) 4PTGLAB (1-888-478-4522) (toll free in USA), or 1(312) 455-8498 (outside USA)

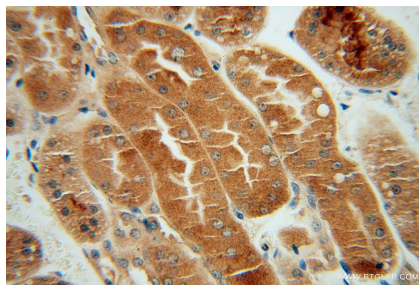
E: proteintech@ptglab.com
W: ptglab.com

This product is exclusively available under Proteintech Group brand and is not available to purchase from any other manufacturer.

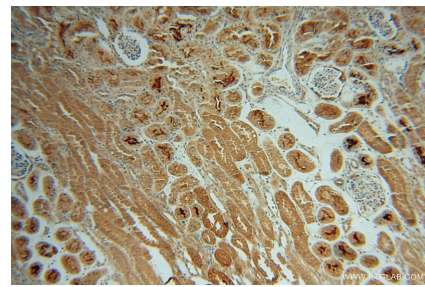
Selected Validation Data



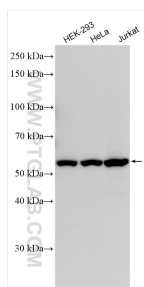
Various lysates were subjected to SDS PAGE followed by western blot with 16424-1-AP (CHMP7 antibody) at dilution of 1:2500 incubated at room temperature for 1.5 hours.



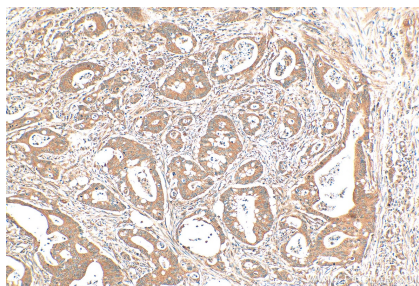
Immunohistochemical analysis of paraffin-embedded human kidney using 16424-1-AP (CHMP7 antibody) at dilution of 1:100 (under 40x lens).



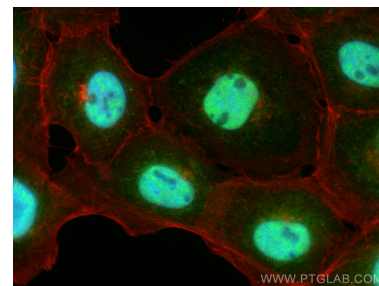
Immunohistochemical analysis of paraffin-embedded human kidney using 16424-1-AP (CHMP7 antibody) at dilution of 1:100 (under 10x lens).



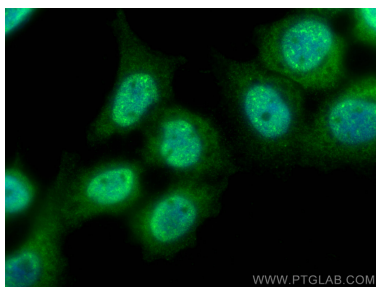
Various lysates were subjected to SDS PAGE followed by western blot with 16424-1-AP (CHMP7 antibody) at dilution of 1:8000 incubated at room temperature for 1.5 hours.



Immunohistochemical analysis of paraffin-embedded human colon cancer tissue slide using 16424-1-AP (CHMP7 antibody) at dilution of 1:400 (under 10x lens). Heat mediated antigen retrieval with Tris-EDTA buffer (pH 9.0).



Immunofluorescent analysis of (4% PFA) fixed A431 cells using CHMP7 antibody (16424-1-AP) at dilution of 1:400 and CoraLite®488-Conjugated AffiniPure Goat Anti-Rabbit IgG(H+L), CL594-phalloidin (red).



Immunofluorescent analysis of (-20°C Methanol) fixed A431 cells using CHMP7 antibody (16424-1-AP) at dilution of 1:400 and CoraLite®488-Conjugated AffiniPure Goat Anti-Rabbit IgG(H+L).