

For Research Use Only

RNASE6 Polyclonal antibody

Catalog Number: 16425-1-AP



Basic Information

Catalog Number: 16425-1-AP	GenBank Accession Number: BC020848	Purification Method: Antigen affinity purification
Size: 150ul , Concentration: 200 ug/ml by Nanodrop;	GeneID (NCBI): 6039	Recommended Dilutions: IHC 1:50-1:500
Source: Rabbit	UNIPROT ID: Q93091	IF/ICC 1:50-1:500
Isotype: IgG	Full Name: ribonuclease, RNase A family, k6	
Immunogen Catalog Number: AG9667	Calculated MW: 150 aa, 17 kDa	

Applications

Tested Applications: IHC, IF/ICC, ELISA	Positive Controls:
Species Specificity: human, mouse	IHC : human liver tissue, mouse heart tissue
Note-IHC: suggested antigen retrieval with TE buffer pH 9.0; (*) Alternatively, antigen retrieval may be performed with citrate buffer pH 6.0	IF/ICC : THP-1 cells,

Background Information

Rnase6, a protein belonging to the superfamily, is considered the only vertebrate specific enzyme known to have a wide range of physiological functions, including digestion, cytotoxicity, angiogenesis, male reproduction, and host defense. Rnase6 expression was upregulated in the peripheral blood and plaque tissues of AS patients (PMID: 34395402).

Storage

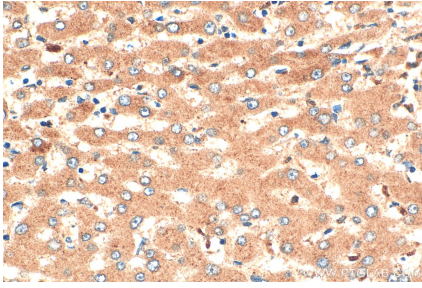
Storage:
Store at -20°C. Stable for one year after shipment.
Storage Buffer:
PBS with 0.02% sodium azide and 50% glycerol pH 7.3.
Aliquoting is unnecessary for -20°C storage

*** 20ul sizes contain 0.1% BSA

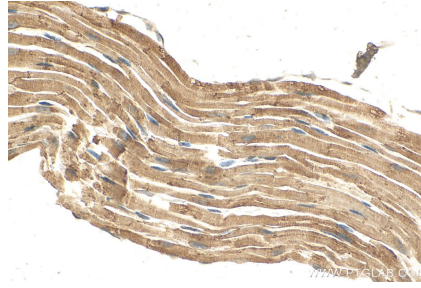
For technical support and original validation data for this product please contact:
T: 1 (888) 4PTGLAB (1-888-478-4522) (toll free in USA), or 1(312) 455-8498 (outside USA)
E: proteintech@ptglab.com
W: ptglab.com

This product is exclusively available under Proteintech Group brand and is not available to purchase from any other manufacturer.

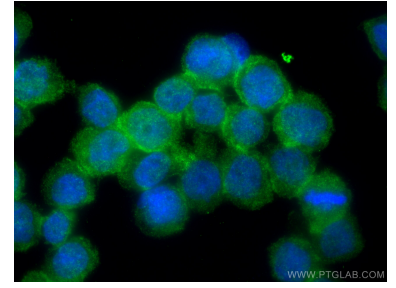
Selected Validation Data



Immunohistochemical analysis of paraffin-embedded human liver tissue slide using 16425-1-AP (RNASE6 antibody) at dilution of 1:200 (under 40x lens). Heat mediated antigen retrieval with Tris-EDTA buffer (pH 9.0).



Immunohistochemical analysis of paraffin-embedded mouse heart tissue slide using 16425-1-AP (RNASE6 antibody) at dilution of 1:200 (under 40x lens). Heat mediated antigen retrieval with Tris-EDTA buffer (pH 9.0).



Immunofluorescent analysis of (4% PFA) fixed THP-1 cells using RNASE6 antibody (16425-1-AP) at dilution of 1:200 and CoraLite®488-Conjugated Goat Anti-Rabbit IgG(H+L) (SA00013-2).