

For Research Use Only

STYXL1 Polyclonal antibody

Catalog Number: 16433-1-AP **2 Publications**



Basic Information

Catalog Number: 16433-1-AP	GenBank Accession Number: BC024035	Purification Method: Antigen affinity purification
Size: 150ul , Concentration: 600 µg/ml by Nanodrop;	GeneID (NCBI): 51657	Recommended Dilutions: WB 1:500-1:2000 IF 1:200-1:800
Source: Rabbit	Full Name: serine/threonine/tyrosine interacting-like 1	
Isotype: IgG	Calculated MW: 313 aa, 36 kDa	
Immunogen Catalog Number: AG9743	Observed MW: 25-36 kDa	

Applications

Tested Applications: IF, WB, ELISA	Positive Controls: WB : NCI-H1299 cells, PC-12 cells, mouse testis tissue, rat testis tissue IF : HeLa cells,
Cited Applications: WB	
Species Specificity: human, mouse, rat	
Cited Species: mouse	

Background Information

STYXL1, Serine/threonine/tyrosine-interacting-like protein 1, is an inner mitochondrial membrane protein that plays a role in induction of stimulus-dependent apoptosis via the intrinsic apoptotic pathway (PMID: 21262771). STYXL1 catalyzes inactive phosphatase (PMID: 20180778, PMID: 23163895). By binding to G3BP1, STYXL1 inhibits the formation of G3BP1-induced stress granules (PMID: 20180778, PMID: 23163895).

Notable Publications

Author	Pubmed ID	Journal	Application
Yan Fang	35541892	Int J Biol Sci	WB
Xue Han	37757635	Int Immunopharmacol	WB

Storage

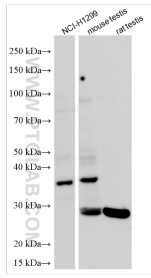
Storage:
Store at -20°C. Stable for one year after shipment.
Storage Buffer:
PBS with 0.02% sodium azide and 50% glycerol pH 7.3.
Aliquoting is unnecessary for -20°C storage

*** 20ul sizes contain 0.1% BSA

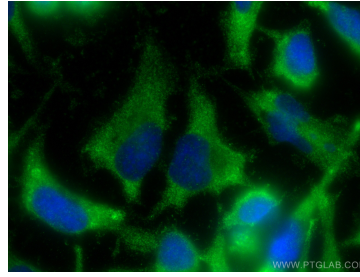
For technical support and original validation data for this product please contact:
T: 1 (888) 4PTGLAB (1-888-478-4522) (toll free in USA), or 1(312) 455-8498 (outside USA)
E: proteintech@ptglab.com
W: ptglab.com

This product is exclusively available under Proteintech Group brand and is not available to purchase from any other manufacturer.

Selected Validation Data



Various lysates were subjected to SDS PAGE followed by western blot with 16433-1-AP (STYXL1 antibody) at dilution of 1:1000 incubated at room temperature for 1.5 hours.



Immunofluorescent analysis of (-20°C Ethanol) fixed HeLa cells using STYXL1 antibody (16433-1-AP) at dilution of 1:400 and CoraLite®488-Conjugated AffiniPure Goat Anti-Rabbit IgG(H+L).