

For Research Use Only

# IMMP1L Polyclonal antibody

Catalog Number: 16434-1-AP



## Basic Information

### Catalog Number:

16434-1-AP

### Size:

150ul , Concentration: 400 ug/ml by Nanodrop;

### Source:

Rabbit

### Isotype:

IgG

### Immunogen Catalog Number:

AG9747

### GenBank Accession Number:

BC023595

### GeneID (NCBI):

196294

### UNIPROT ID:

Q96LU5

### Full Name:

IMP1 inner mitochondrial membrane peptidase-like (S. cerevisiae)

### Calculated MW:

166 aa, 19 kDa

### Observed MW:

19 kDa

### Purification Method:

Antigen affinity purification

### Recommended Dilutions:

WB 1:500-1:2000

## Applications

### Tested Applications:

WB, ELISA

### Species Specificity:

human, mouse, rat

### Positive Controls:

WB : mouse liver tissue,

## Background Information

IMMP1L, a member of the peptidase S26 family, catalyzes the removal of transport peptides that target proteins from the mitochondrial matrix, across the inner membrane, and into the intermembrane space. IMMP1L is localized on the Mitochondrion inner membrane. Heterodimer of 2 subunits, IMMPL1 and IMMPL2 (PMID: 26341627; 28337252).

## Storage

### Storage:

Store at -20°C. Stable for one year after shipment.

### Storage Buffer:

PBS with 0.02% sodium azide and 50% glycerol pH 7.3.

Aliquoting is unnecessary for -20°C storage

\*\*\* 20ul sizes contain 0.1% BSA

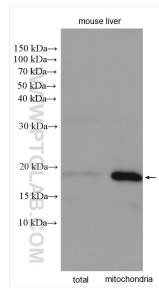
For technical support and original validation data for this product please contact:

T: 1 (888) 4PTGLAB (1-888-478-4522) (toll free in USA), or 1(312) 455-8498 (outside USA)

E: [proteintech@ptglab.com](mailto:proteintech@ptglab.com)  
W: [ptglab.com](http://ptglab.com)

This product is exclusively available under Proteintech Group brand and is not available to purchase from any other manufacturer.

## Selected Validation Data



mouse liver total extract lysate and mitochondria extract lysate were subjected to SDS PAGE followed by western blot with 16434-1-AP (IMMP1L antibody) at dilution of 1:1000 incubated at room temperature for 1.5 hours.