

For Research Use Only

NIT2 Polyclonal antibody

Catalog Number: 16438-1-AP **2 Publications**



Basic Information

Catalog Number: 16438-1-AP	GenBank Accession Number: BC020620	Purification Method: Antigen affinity purification
Size: 150ul , Concentration: 350 µg/ml by Nanodrop and 300 µg/ml by Bradford method using BSA as the standard;	GeneID (NCBI): 56954	Recommended Dilutions: WB 1:500-1:3000
Source: Rabbit	Full Name: nitrlase family, member 2	
Isotype: IgG	Calculated MW: 276 aa, 31 kDa	
Immunogen Catalog Number: AG9756	Observed MW: 31 kDa	

Applications

Tested Applications: WB,ELISA	Positive Controls: WB : mouse liver tissue, human kidney tissue, human brain tissue, human heart tissue, mouse kidney tissue, rat liver tissue
Cited Applications: IHC, WB	
Species Specificity: human, mouse, rat	
Cited Species: human, mouse	

Background Information

Notable Publications

Author	Pubmed ID	Journal	Application
Shan Chen	31925645	Mol Biol Rep	WB,IHC
Gunars Osis	27117802	Physiol Rep	WB

Storage

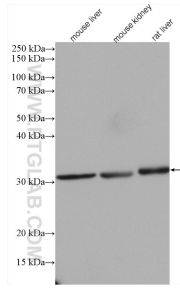
Storage:
Store at -20°C. Stable for one year after shipment.
Storage Buffer:
PBS with 0.02% sodium azide and 50% glycerol pH 7.3.
Aliquoting is unnecessary for -20°C storage

*** 20ul sizes contain 0.1% BSA

For technical support and original validation data for this product please contact:
T: 1 (888) 4PTGLAB (1-888-478-4522) (toll free in USA), or 1(312) 455-8498 (outside USA) E: proteintech@ptglab.com W: ptglab.com

This product is exclusively available under Proteintech Group brand and is not available to purchase from any other manufacturer.

Selected Validation Data



Various lysates were subjected to SDS PAGE followed by western blot with 16438-1-AP (NIT2 antibody) at dilution of 1:1500 incubated at room temperature for 1.5 hours.