

For Research Use Only

Carboxypeptidase M Polyclonal antibody



Catalog Number: 16440-1-AP

Basic Information

Catalog Number: 16440-1-AP	GenBank Accession Number: BC022276	Purification Method: Antigen affinity purification
Size: 150ul , Concentration: 133 µg/ml by Bradford method using BSA as the standard;	GeneID (NCBI): 1368	Recommended Dilutions: WB 1:500-1:1000
Source: Rabbit	Full Name: carboxypeptidase M	
Isotype: IgG	Calculated MW: 443 aa, 51 kDa	
Immunogen Catalog Number: AG9761	Observed MW: 54 kDa	

Applications

Tested Applications: WB, ELISA	Positive Controls: WB : HEK-293 cells, mouse liver tissue
Species Specificity: human, mouse	

Background Information

CPM (Carboxypeptidase M), a plasma membrane-bound enzyme, is present in many human organs and differs from other carboxypeptidases that cleave basic C-terminal amino acids (PMID:2394713). CPM is structurally, catalytically and immunologically distinct from other carboxypeptidases, and expressed on cell membranes in a glycosyl-phosphatidylinositol-anchored form and it can be a novel marker and cellular player in lipid uptake and/or metabolism of MAs by promoting foam cell formation (PMID:22157720). This full length protein has a signal peptide with 17 amino acid, a propeptide with 20 amino acid and five glycosylation sites.

Storage

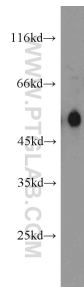
Storage:
Store at -20°C. Stable for one year after shipment.
Storage Buffer:
PBS with 0.02% sodium azide and 50% glycerol pH 7.3.
Aliquoting is unnecessary for -20°C storage

*** 20ul sizes contain 0.1% BSA

For technical support and original validation data for this product please contact:
T: 1 (888) 4PTGLAB (1-888-478-4522) (toll free in USA), or 1(312) 455-8498 (outside USA)
E: proteintech@ptglab.com
W: ptglab.com

This product is exclusively available under Proteintech Group brand and is not available to purchase from any other manufacturer.

Selected Validation Data



HEK-293 cells were subjected to SDS PAGE followed by western blot with 16440-1-AP (Carboxypeptidase M antibody) at dilution of 1:600 incubated at room temperature for 1.5 hours.