

Caveolin-1 Polyclonal antibody

Catalog Number: 16447-1-AP

Featured Product

81 Publications

Basic Information

Catalog Number:

16447-1-AP

Size:

150ul, Concentration: 650 µg/ml by Nanodrop and 333 µg/ml by Bradford method using BSA as the standard;

Source:

Rabbit

Isotype:

IgG

Immunogen Catalog Number:

AG8049

GenBank Accession Number:

BC006432

GeneID (NCBI):

857

Full Name:

caveolin 1, caveolae protein, 22kDa

Calculated MW:

22 kDa

Observed MW:

20-25 kDa

Purification Method:

Antigen affinity purification

Recommended Dilutions:

WB 1:500-1:2000

IP 0.5-4.0 µg for IP and 1:500-1:1000 for WB

IHC 1:50-1:500

Applications

Tested Applications:

IHC, IP, WB, ELISA

Cited Applications:

IF, IHC, IP, WB

Species Specificity:

human, mouse, rat

Cited Species:

human, rat, mouse, zebrafish, canine, bovine

Note-IHC: suggested antigen retrieval with TE buffer pH 9.0; (*) Alternatively, antigen retrieval may be performed with citrate buffer pH 6.0

Positive Controls:

WB: A549 cells, HeLa cells, NIH/3T3 cells

IP: A549 cells,

IHC: human breast cancer tissue, human heart tissue, human lung cancer tissue, human liver tissue, human lung tissue

Background Information

Caveolin-1 (CAV1), a multifunctional protein, is the main constituent molecule of caveolae and represents a scaffolding molecule for several signaling molecules including epidermal growth factor receptor (PMID: 19641024). Several studies have implicated that a reduced expression of CAV1 was found in cancers including head and neck carcinoma (PMID: 19002186). However, other studies recognize CAV1 as a tumor promoter because CAV1 is overexpressed in various kinds of cancers, especially in oral cancer (PMID: 20558341). Recent study also show that CAV1 is involved in astric Cancer (PMID: 25339030). MW of Caveolin-1 is from 20-25 kDa due to phosphorylation (PMID: 10198051).

Notable Publications

Author	Pubmed ID	Journal	Application
Li Wu	36184060	Vascul Pharmacol	WB, IF
Dali Zhao	34555268	FEBS Open Bio	WB
Denghui Wei	32958903	Cell Res	WB

Storage

Storage:

Store at -20°C. Stable for one year after shipment.

Storage Buffer:

PBS with 0.02% sodium azide and 50% glycerol pH 7.3.

Aliquoting is unnecessary for -20°C storage

*** 20ul sizes contain 0.1% BSA

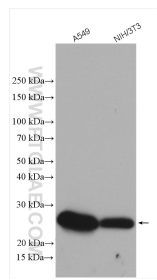
For technical support and original validation data for this product please contact:

T: 1 (888) 4PTGLAB (1-888-478-4522) (toll free in USA), or 1(312) 455-8498 (outside USA)

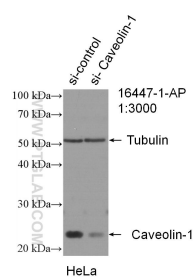
E: proteintech@ptglab.com
 W: ptglab.com

This product is exclusively available under Proteintech Group brand and is not available to purchase from any other manufacturer.

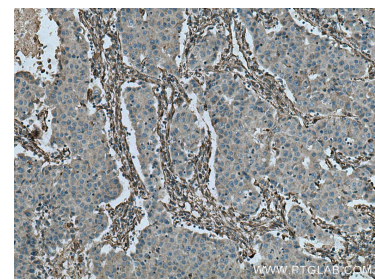
Selected Validation Data



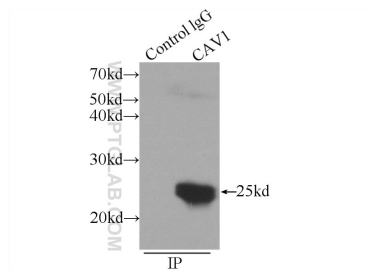
Various lysates were subjected to SDS PAGE followed by western blot with 16447-1-AP (Caveolin-1 antibody) at dilution of 1:1000 incubated at room temperature for 1.5 hours.



WB result of Caveolin-1 antibody (16447-1-AP; 1:3000; incubated at room temperature for 1.5 hours) with sh-Control and sh-Caveolin-1 transfected HeLa cells.



Immunohistochemical analysis of paraffin-embedded human breast cancer tissue slide using 16447-1-AP (Caveolin-1 antibody) at dilution of 1:200 (under 10x lens). Heat mediated antigen retrieval with Tris-EDTA buffer (pH 9.0).



IP Result of anti-Caveolin-1 (IP:16447-1-AP, 3ug; Detection:16447-1-AP 1:500) with A549 cells lysate 1200ug.