

For Research Use Only

# INTS12 Polyclonal antibody

Catalog Number: 16455-1-AP

4 Publications



## Basic Information

### Catalog Number:

16455-1-AP

### Size:

150ul, Concentration: 600 ug/ml by Nanodrop;

### Source:

Rabbit

### Isotype:

IgG

### Immunogen Catalog Number:

AG9403

### GenBank Accession Number:

BC014442

### GeneID (NCBI):

57117

### UNIPROT ID:

Q96CB8

### Full Name:

integrator complex subunit 12

### Calculated MW:

462 aa, 49 kDa

### Observed MW:

49 kDa

### Purification Method:

Antigen affinity purification

### Recommended Dilutions:

WB 1:1000-1:4000

IHC 1:250-1:1000

## Applications

### Tested Applications:

WB, IHC, ELISA

### Cited Applications:

WB

### Species Specificity:

human, mouse, rat

### Cited Species:

human

### Positive Controls:

WB : HepG2 cells,

IHC : human stomach tissue,

**Note-IHC: suggested antigen retrieval with TE buffer pH 9.0; (\*) Alternatively, antigen retrieval may be performed with citrate buffer pH 6.0**

## Notable Publications

| Author               | Pubmed ID | Journal    | Application |
|----------------------|-----------|------------|-------------|
| Lauren G. Mascibroda | 36229431  | Nat Commun | WB          |
| Renske Oegema        | 28542170  | PLoS Genet | WB          |
| Daniel Blears        | 39504960  | Mol Cell   | WB          |

## Storage

### Storage:

Store at -20°C. Stable for one year after shipment.

### Storage Buffer:

PBS with 0.02% sodium azide and 50% glycerol pH 7.3.

Aliquoting is unnecessary for -20°C storage

\*\*\* 20ul sizes contain 0.1% BSA

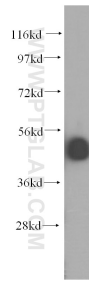
For technical support and original validation data for this product please contact:

T: 1 (888) 4PTGLAB (1-888-478-4522) (toll free in USA), or 1(312) 455-8498 (outside USA)

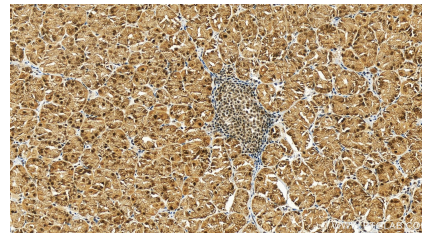
E: [proteintech@ptglab.com](mailto:proteintech@ptglab.com)  
W: [ptglab.com](http://ptglab.com)

This product is exclusively available under Proteintech Group brand and is not available to purchase from any other manufacturer.

## Selected Validation Data



HepG2 cells were subjected to SDS PAGE followed by western blot with 16455-1-AP (INTS12 antibody) at dilution of 1:1000 incubated at room temperature for 1.5 hours.



Immunohistochemical analysis of paraffin-embedded human stomach tissue slide using 16455-1-AP (INTS12 antibody) at dilution of 1:500 (under 20x lens). Heat mediated antigen retrieval with Tris-EDTA buffer (pH 9.0).