

For Research Use Only

DPEP2 Polyclonal antibody

Catalog Number: 16466-1-AP **3 Publications**



Basic Information

Catalog Number: 16466-1-AP	GenBank Accession Number: BC024021	Purification Method: Antigen affinity purification
Size: 150ul , Concentration: 200 µg/ml by Nanodrop and 180 µg/ml by Bradford method using BSA as the standard;	GeneID (NCBI): 64174	Recommended Dilutions: IHC 1:20-1:200
Source: Rabbit	Full Name: dipeptidase 2	
Isotype: IgG	Calculated MW: 399 aa, 44 kDa	
Immunogen Catalog Number: AG9545	Observed MW: 45 kDa, 50 kDa	

Applications

Tested Applications: IHC, ELISA	Positive Controls: IHC : human kidney tissue,
Cited Applications: IHC, IP, WB	
Species Specificity: human, mouse, rat	
Cited Species: human	

Note-IHC: suggested antigen retrieval with TE buffer pH 9.0; (*) Alternatively, antigen retrieval may be performed with citrate buffer pH 6.0

Background Information

DPEP2(Dipeptidase 2) may play an important role in the regulation of leukotriene activity which converts leukotriene d4 to leukotriene e4. It belongs to the peptidase M19 family. This protein has 2 isoforms produced by alternative splicing with the molecular weight of 53 kDa and 44 kDa.

Notable Publications

Author	Pubmed ID	Journal	Application
Wu Hsin-Yi HY	20572634	J Proteome Res	WB,IP
Yuanyi Wang	37449493	Oncol Rep	WB,IHC
Xiangqian Zhang	37375818	Pharmaceuticals (Basel)	

Storage

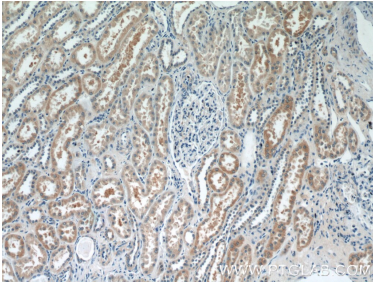
Storage:
Store at -20°C. Stable for one year after shipment.
Storage Buffer:
PBS with 0.02% sodium azide and 50% glycerol pH 7.3.
Aliquoting is unnecessary for -20°C storage

*** 20ul sizes contain 0.1% BSA

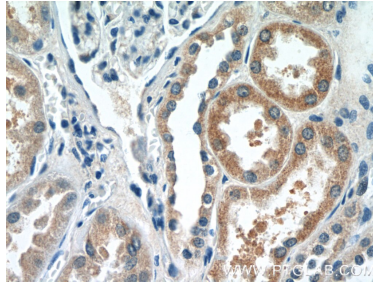
For technical support and original validation data for this product please contact:
T: 1 (888) 4PTGLAB (1-888-478-4522) (toll free in USA), or 1(312) 455-8498 (outside USA)
E: proteintech@ptglab.com
W: ptglab.com

This product is exclusively available under Proteintech Group brand and is not available to purchase from any other manufacturer.

Selected Validation Data



Immunohistochemical analysis of paraffin-embedded human kidney tissue slide using 16466-1-AP (DPEP2 Antibody) at dilution of 1:50 (under 10x lens).



Immunohistochemical analysis of paraffin-embedded human kidney tissue slide using 16466-1-AP (DPEP2 Antibody) at dilution of 1:50 (under 40x lens).