

For Research Use Only

SRI Polyclonal antibody

Catalog Number: 16471-1-AP **4 Publications**



Basic Information

Catalog Number: 16471-1-AP	GenBank Accession Number: BC011025	Purification Method: Antigen affinity purification
Size: 150ul , Concentration: 700 µg/ml by Nanodrop and 400 µg/ml by Bradford method using BSA as the standard;	GeneID (NCBI): 6717	Recommended Dilutions: WB 1:500-1:1000 IP 0.5-4.0 ug for IP and 1:500-1:1000 for WB
Source: Rabbit	Full Name: sorcin	IHC 1:250-1:1000 IF 1:20-1:200
Isotype: IgG	Calculated MW: 198 aa, 22 kDa	
Immunogen Catalog Number: AG9553	Observed MW: 22 kDa	

Applications

Tested Applications: IF, IHC, IP, WB, ELISA	Positive Controls: WB : mouse liver tissue, HepG2 cells, human liver tissue, rat liver tissue
Cited Applications: IF, IHC, IP, WB	IP: HepG2 cells,
Species Specificity: human, mouse, rat	IHC: human liver tissue,
Cited Species: human, mouse	IF: HepG2 cells,

Note-IHC: suggested antigen retrieval with TE buffer pH 9.0; (*) Alternatively, antigen retrieval may be performed with citrate buffer pH 6.0

Background Information

Notable Publications

Author	Pubmed ID	Journal	Application
Fei Ling	34716295	Cell Death Dis	WB,IHC,IF,IP
Dan Wang	33675811	Arch Biochem Biophys	IF, WB
Yaoting Sun	28681913	J Cell Physiol	WB

Storage

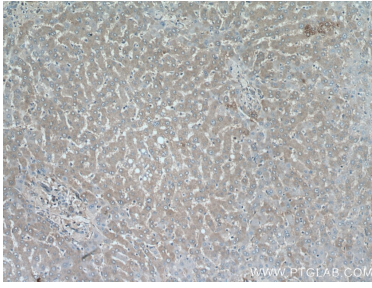
Storage:
Store at -20°C. Stable for one year after shipment.
Storage Buffer:
PBS with 0.02% sodium azide and 50% glycerol pH 7.3.
Aliquoting is unnecessary for -20°C storage

***** 20ul sizes contain 0.1% BSA**

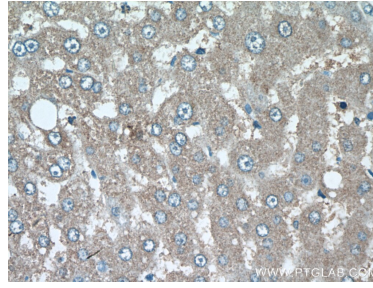
For technical support and original validation data for this product please contact:
T: 1 (888) 4PTGLAB (1-888-478-4522) (toll free in USA), or 1(312) 455-8498 (outside USA)
E: proteintech@ptglab.com
W: ptglab.com

This product is exclusively available under Proteintech Group brand and is not available to purchase from any other manufacturer.

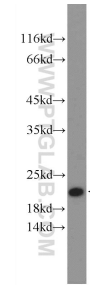
Selected Validation Data



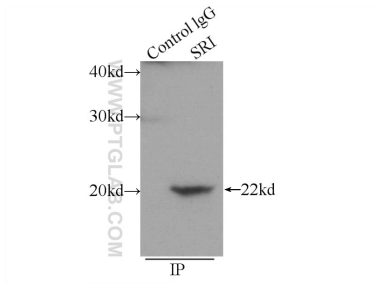
Immunohistochemical analysis of paraffin-embedded human liver tissue slide using 16471-1-AP (SRI antibody) at dilution of 1:500 (under 10x lens).



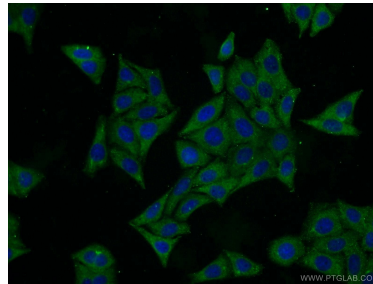
Immunohistochemical analysis of paraffin-embedded human liver tissue slide using 16471-1-AP (SRI antibody) at dilution of 1:500 (under 40x lens).



mouse liver tissue were subjected to SDS PAGE followed by western blot with 16471-1-AP (SRI Antibody) at dilution of 1:600 incubated at room temperature for 1.5 hours.



IP Result of anti-SRI (IP:16471-1-AP, 3ug; Detection:16471-1-AP 1:500) with HepG2 cells lysate 600ug.



Immunofluorescent analysis of HepG2 cells using 16471-1-AP (SRI antibody) at dilution of 1:50 and Alexa Fluor 488-conjugated AffiniPure Goat Anti-Rabbit IgG(H+L).