

For Research Use Only

JMJD6 Polyclonal antibody

Catalog Number: 16476-1-AP

Featured Product

7 Publications



Basic Information

Catalog Number:
16476-1-AP

Size:
150ul, Concentration: 500 µg/ml by Nanodrop and 373 µg/ml by Bradford method using BSA as the standard;

Source:
Rabbit

Isotype:
IgG

Immunogen Catalog Number:
AG9590

GenBank Accession Number:
BC066654

GeneID (NCBI):
23210

Full Name:
jumonji domain containing 6

Calculated MW:
46 kDa

Observed MW:
46 kDa

Purification Method:
Antigen affinity purification

Recommended Dilutions:
WB 1:500-1:1000
IP 0.5-4.0 ug for IP and 1:500-1:1000 for WB
IHC 1:50-1:500

Applications

Tested Applications:
FC, IHC, IP, WB, ELISA

Cited Applications:
ChIP, CoIP, IF, IP, WB

Species Specificity:
human, mouse, rat

Cited Species:
human, rat, mouse

Note-IHC: suggested antigen retrieval with TE buffer pH 9.0; (*) Alternatively, antigen retrieval may be performed with citrate buffer pH 6.0

Positive Controls:

WB: mouse liver tissue,

IP: K-562 cells,

IHC: mouse heart tissue, human heart tissue

Background Information

Notable Publications

Author	Pubmed ID	Journal	Application
Wei Zhang	33684176	PLoS Pathog	WB
Jiacheng Li	35925880	J Med Chem	WB
Wei-Wei Gao	29628309	Mol Cell	WB,IP,ChIP

Storage

Storage:

Store at -20°C. Stable for one year after shipment.

Storage Buffer:

PBS with 0.02% sodium azide and 50% glycerol pH 7.3.

Aliquoting is unnecessary for -20°C storage

*** 20ul sizes contain 0.1% BSA

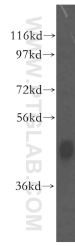
For technical support and original validation data for this product please contact:

T: 1 (888) 4PTGLAB (1-888-478-4522) (toll free in USA), or 1(312) 455-8498 (outside USA)

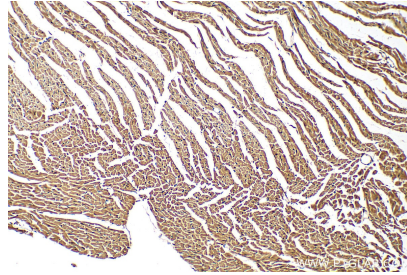
E: proteintech@ptglab.com
W: ptglab.com

This product is exclusively available under Proteintech Group brand and is not available to purchase from any other manufacturer.

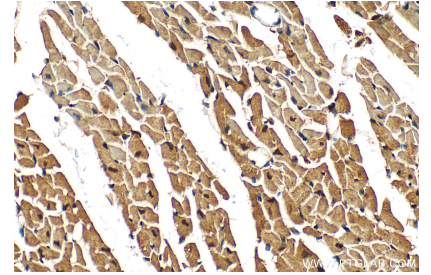
Selected Validation Data



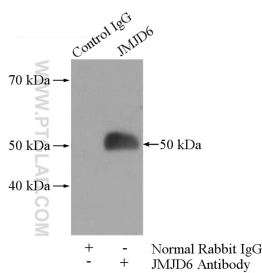
mouse liver tissue were subjected to SDS PAGE followed by western blot with 16476-1-AP (JMJD6 antibody) at dilution of 1:500 incubated at room temperature for 1.5 hours.



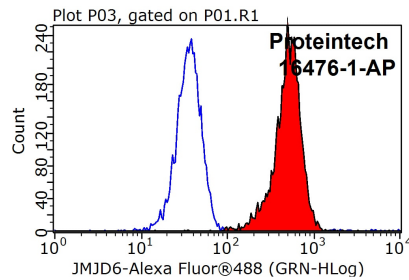
Immunohistochemical analysis of paraffin-embedded mouse heart tissue slide using 16476-1-AP (JMJD6 antibody) at dilution of 1:200 (under 10x lens). Heat mediated antigen retrieval with Tris-EDTA buffer (pH 9.0).



Immunohistochemical analysis of paraffin-embedded mouse heart tissue slide using 16476-1-AP (JMJD6 antibody) at dilution of 1:200 (under 40x lens). Heat mediated antigen retrieval with Tris-EDTA buffer (pH 9.0).



IP Result of anti-JMJD6 (IP:16476-1-AP, 4ug; Detection:16476-1-AP 1:500) with K-562 cells lysate 1200ug.



1×10^6 K-562 cells were stained with 0.2ug JMJD6 antibody (16476-1-AP, red) and control antibody (blue). Fixed with 90% MeOH blocked with 3% BSA (30 min). Alexa Fluor 488-conjugated AffiniPure Goat Anti-Rabbit IgG(H+L) with dilution 1:1000.