

For Research Use Only

# ADO Polyclonal antibody, PBS Only

Catalog Number: 16479-1-PBS

Featured Product



## Basic Information

**Catalog Number:**

16479-1-PBS

**Size:**

100ug, Concentration: 1 mg/ml by Nanodrop;

**Source:**

Rabbit

**Isotype:**

IgG

**Immunogen Catalog Number:**

AG9598

**GenBank Accession Number:**

BC018660

**GeneID (NCBI):**

84890

**UNIPROT ID:**

Q965Z5

**Full Name:**

2-aminoethanethiol (cysteamine) dioxygenase

**Calculated MW:**

270 aa, 30 kDa

**Observed MW:**

28 kDa-30 kDa

**Purification Method:**

Antigen affinity purification

## Applications

**Tested Applications:**

WB, IHC, Indirect ELISA

**Species Specificity:**

human, mouse, rat

## Background Information

ADO, or 2-aminoethanethiol dioxygenase, cysteamine dioxygenase, is a thiol dioxygenase in humans that adds two oxygen atoms to cysteamine, forming hypotaurine (PMID: 39637922). ADO has been reported to exhibit two distinct biological functions with a nonheme iron center. It catalyzes oxidation of both cysteamine in sulfur metabolism and N-terminal cysteine-containing proteins or peptides, such as regulator of G protein signaling 5 (RGS5) (PMID: 34508780). ADO is ubiquitously expressed with the highest levels in brain, heart, and skeletal muscle. Western blot analysis detected two bands at 28-30 kDa as indicated in publications (PMID: 17581819).

## Storage

**Storage:**

Store at -80°C.

**Storage Buffer:**

PBS only, pH7.3

For technical support and original validation data for this product please contact:

T: 1 (888) 4PTGLAB (1-888-478-4522) (toll free in USA), or 1(312) 455-8498 (outside USA)

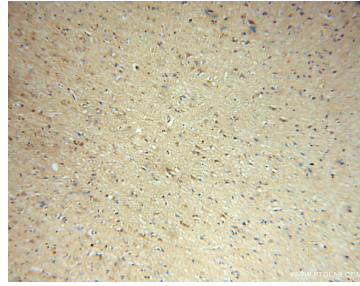
E: [proteintech@ptglab.com](mailto:proteintech@ptglab.com)  
W: [ptglab.com](http://ptglab.com)

This product is exclusively available under Proteintech Group brand and is not available to purchase from any other manufacturer.

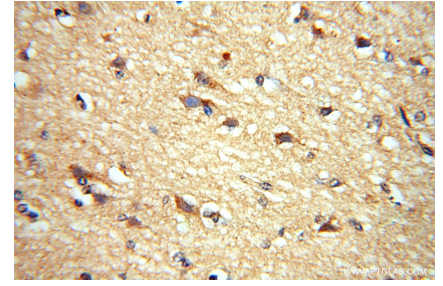
## Selected Validation Data



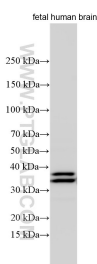
human brain tissue were subjected to SDS PAGE followed by western blot with 16479-1-AP (ADO antibody) at dilution of 1:300 incubated at room temperature for 1.5 hours. This data was developed using the same antibody clone with 16479-1-PBS in a different storage buffer formulation.



Immunohistochemical analysis of paraffin-embedded human brain using 16479-1-AP (ADO antibody) at dilution of 1:50 (under 10x lens). This data was developed using the same antibody clone with 16479-1-PBS in a different storage buffer formulation.



Immunohistochemical analysis of paraffin-embedded human brain using 16479-1-AP (ADO antibody) at dilution of 1:50 (under 40x lens). This data was developed using the same antibody clone with 16479-1-PBS in a different storage buffer formulation.



Various lysates were subjected to SDS PAGE followed by western blot with 16479-1-AP (ADO antibody) at dilution of 1:1000 incubated at room temperature for 1.5 hours. This data was developed using the same antibody clone with 16479-1-PBS in a different storage buffer formulation.