

For Research Use Only

EDC3 Polyclonal antibody

Catalog Number: 16486-1-AP

5 Publications



Basic Information

Catalog Number:

16486-1-AP

Size:

150ul, Concentration: 350 ug/ml by Nanodrop and 233 ug/ml by Bradford method using BSA as the standard;

Source:

Rabbit

Isotype:

IgG

Immunogen Catalog Number:

AG9608

GenBank Accession Number:

BC021271

GeneID (NCBI):

80153

UNIPROT ID:

Q96F86

Full Name:

enhancer of mRNA decapping 3 homolog (S. cerevisiae)

Calculated MW:

508 aa, 56 kDa

Observed MW:

56 kDa

Purification Method:

Antigen affinity purification

Recommended Dilutions:

WB 1:1000-1:6000

IP 0.5-4.0 ug for 1.0-3.0 mg of total protein lysate

IHC 1:50-1:500

IF/ICC 1:200-1:800

Applications

Tested Applications:

WB, IHC, IF/ICC, IP, ELISA

Cited Applications:

WB, IF

Species Specificity:

human, mouse, rat

Cited Species:

human, mouse, rat

Note-IHC: suggested antigen retrieval with TE buffer pH 9.0; (*) Alternatively, antigen retrieval may be performed with citrate buffer pH 6.0

Positive Controls:

WB : HEK-293T cells, MCF-7 cells, HeLa cells

IP : HeLa cells,

IHC : human kidney tissue, human heart tissue, human placenta tissue, human skin tissue, human liver tissue, human spleen tissue

IF/ICC : HeLa cells,

Notable Publications

Author	Pubmed ID	Journal	Application
Eva Riechert	33979607	Cell Rep	WB
Nina Ripin	38536035	J Cell Biol	IF, WB
Liang Fang	38190710	Cancer Res	IF

Storage

Storage:

Store at -20°C. Stable for one year after shipment.

Storage Buffer:

PBS with 0.02% sodium azide and 50% glycerol pH 7.3.

Aliquoting is unnecessary for -20°C storage

*** 20ul sizes contain 0.1% BSA

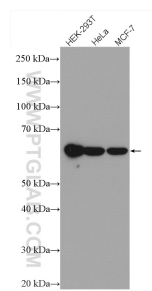
For technical support and original validation data for this product please contact:

T: 1 (888) 4PTGLAB (1-888-478-4522) (toll free in USA), or 1(312) 455-8498 (outside USA)

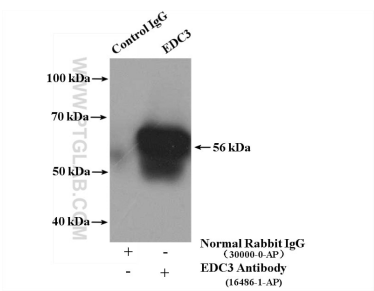
E: proteintech@ptglab.com
W: ptglab.com

This product is exclusively available under Proteintech Group brand and is not available to purchase from any other manufacturer.

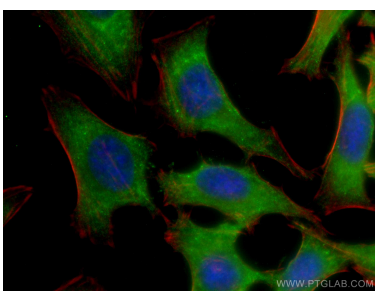
Selected Validation Data



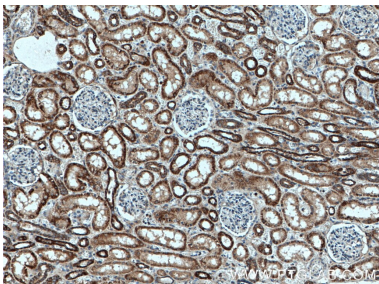
Various lysates were subjected to SDS PAGE followed by western blot with 16486-1-AP (EDC3 antibody) at dilution of 1:4000 incubated at room temperature for 1.5 hours.



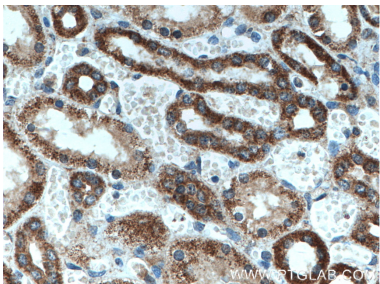
IP result of anti-EDC3 (IP:16486-1-AP, 4µg; Detection:16486-1-AP 1:500) with HeLa cells lysate 3200ug.



Immunofluorescent analysis of (-20°C Ethanol) fixed HeLa cells using EDC3 antibody (16486-1-AP) at dilution of 1:400 and CoraLite®488-Conjugated Goat Anti-Rabbit IgG(H+L), CL594-Phalloidin (red).



Immunohistochemical analysis of paraffin-embedded human kidney tissue slide using 16486-1-AP (EDC3 antibody) at dilution of 1:200 (under 10x lens. Heat mediated antigen retrieval with Tris-EDTA buffer (pH 9.0).



Immunohistochemical analysis of paraffin-embedded human kidney tissue slide using 16486-1-AP (EDC3 antibody) at dilution of 1:200 (under 40x lens. Heat mediated antigen retrieval with Tris-EDTA buffer (pH 9.0).