

For Research Use Only

RPL26L1 Polyclonal antibody

Catalog Number: 16487-1-AP

1 Publications



Basic Information

Catalog Number: 16487-1-AP	GenBank Accession Number: BC017360	Purification Method: Antigen affinity purification
Size: 150ul , Concentration: 133 ug/ml by Bradford method using BSA as the standard;	GeneID (NCBI): 51121	Recommended Dilutions: WB 1:500-1:1000 IHC 1:50-1:500 IF/ICC 1:50-1:500
Source: Rabbit	UNIPROT ID: Q9UNX3	
Isotype: IgG	Full Name: ribosomal protein L26-like 1	
Immunogen Catalog Number: AG9609	Calculated MW: 145 aa, 17 kDa	
	Observed MW: 22-25 kDa	

Applications

Tested Applications: WB, IHC, IF/ICC, ELISA	Positive Controls: WB : HEK-293 cells, K-562 cells, MCF-7 cells
Cited Applications: WB	IHC : human stomach tissue,
Species Specificity: human, mouse, rat	IF/ICC : HeLa cells,
Cited Species: rat	
Note-IHC: suggested antigen retrieval with TE buffer pH 9.0; (*) Alternatively, antigen retrieval may be performed with citrate buffer pH 6.0	

Background Information

RPL26L1, also named as RPL26P1, belongs to the universal ribosomal protein uL24 family. RPL26L1 shares high sequence similarity with ribosomal protein L26 and plays a role in protein synthesis (PMID: 31673979). The molecular mass of RPL26L1 is 17 kDa. Studies have shown that RPL26L1 is related to autism spectrum disorder and is one of the potential biomarkers of the neurodegenerative disease Friedreich's ataxia. In addition, RPL26L1 may be closely related with SLE development (PMID: 31889427).

Notable Publications

Author	Pubmed ID	Journal	Application
Qiang Zhang	35884735	Brain Sci	WB

Storage

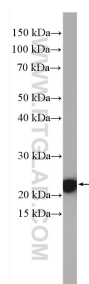
Storage:
Store at -20°C. Stable for one year after shipment.
Storage Buffer:
PBS with 0.02% sodium azide and 50% glycerol pH 7.3.
Aliquoting is unnecessary for -20°C storage

*** 20ul sizes contain 0.1% BSA

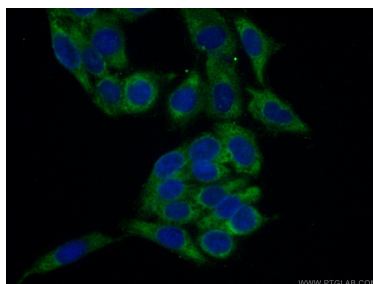
For technical support and original validation data for this product please contact:
T: 1 (888) 4PTGLAB (1-888-478-4522) (toll free in USA), or 1(312) 455-8498 (outside USA)
E: proteintech@ptglab.com
W: ptglab.com

This product is exclusively available under Proteintech Group brand and is not available to purchase from any other manufacturer.

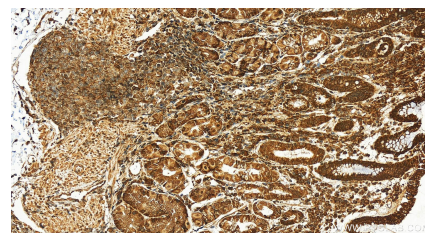
Selected Validation Data



HEK-293 cells were subjected to SDS PAGE followed by western blot with 16487-1-AP (RPL26L1 antibody) at dilution of 1:600 incubated at room temperature for 1.5 hours.



Immunofluorescent analysis of (-20°C Ethanol) fixed HeLa cells using 16487-1-AP (RPL26L1 antibody) at dilution of 1:50 and Alexa Fluor 488-conjugated AffiniPure Goat Anti-Rabbit IgG(H+L).



Immunohistochemical analysis of paraffin-embedded human stomach tissue slide using 16487-1-AP (RPL26L1 antibody) at dilution of 1:200 (under 20x lens). Heat mediated antigen retrieval with Tris-EDTA buffer (pH 9.0).