

For Research Use Only

MCEE Polyclonal antibody

Catalog Number: 16499-1-AP **2 Publications**



Basic Information

Catalog Number: 16499-1-AP	GenBank Accession Number: BC020825	Purification Method: Antigen affinity purification
Size: 150ul , Concentration: 450 µg/ml by Nanodrop;	GeneID (NCBI): 84693	Recommended Dilutions: WB 1:500-1:2000 IF 1:50-1:500
Source: Rabbit	Full Name: methylmalonyl CoA epimerase	
Isotype: IgG	Calculated MW: 176 aa, 19 kDa	
Immunogen Catalog Number: AG9665	Observed MW: 15-19 kDa	

Applications

Tested Applications: IF, WB, ELISA	Positive Controls:
Cited Applications: WB	WB : mouse liver tissue, human heart tissue, human liver tissue, rat liver tissue
Species Specificity: human, mouse, rat	IF : HepG2 cells,
Cited Species: human	

Background Information

Notable Publications

Author	Pubmed ID	Journal	Application
Ana P Gomes	35361954	Nat Metab	WB
Lan Wang	37979225	Biochim Biophys Acta Mol Basis Dis	WB

Storage

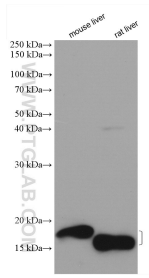
Storage:
Store at -20°C. Stable for one year after shipment.
Storage Buffer:
PBS with 0.02% sodium azide and 50% glycerol pH 7.3.
Aliquoting is unnecessary for -20°C storage

*** 20ul sizes contain 0.1% BSA

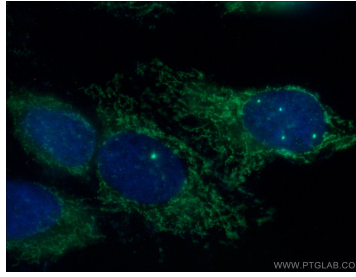
For technical support and original validation data for this product please contact:
T: 1 (888) 4PTGLAB (1-888-478-4522) (toll free in USA), or 1(312) 455-8498 (outside USA) E: proteintech@ptglab.com W: ptglab.com

This product is exclusively available under Proteintech Group brand and is not available to purchase from any other manufacturer.

Selected Validation Data



Various lysates were subjected to SDS PAGE followed by western blot with 16499-1-AP (MCEE antibody) at dilution of 1:1000 incubated at room temperature for 1.5 hours.



Immunofluorescent analysis of (4% PFA) fixed HepG2 cells using 16499-1-AP (MCEE antibody) at dilution of 1:50 and Alexa Fluor 488-conjugated AffiniPure Goat Anti-Rabbit IgG(H+L).