

For Research Use Only

# DNAJB14 Polyclonal antibody, PBS Only

Catalog Number: 16501-1-PBS



## Basic Information

**Catalog Number:**

16501-1-PBS

**Size:**

100ug, Concentration: 1 mg/ml by Nanodrop;

**Source:**

Rabbit

**Isotype:**

IgG

**Immunogen Catalog Number:**

AG9668

**GenBank Accession Number:**

BC022248

**GeneID (NCBI):**

79982

**UNIPROT ID:**

Q8TBM8

**Full Name:**

DnaJ (Hsp40) homolog, subfamily B, member 14

**Calculated MW:**

379 aa, 43 kDa

**Observed MW:**

43 kDa

**Purification Method:**

Antigen affinity purification

## Applications

**Tested Applications:**

WB, IHC, IF/ICC, IP, Indirect ELISA

**Species Specificity:**

human, mouse, rat

## Storage

**Storage:**

Store at -80°C.

**Storage Buffer:**

PBS only, pH7.3

For technical support and original validation data for this product please contact:

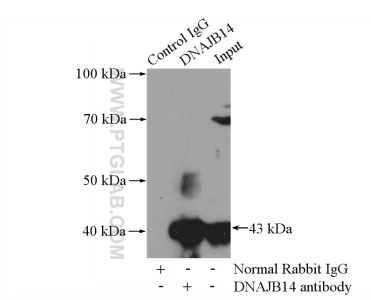
T: 1 (888) 4PTGLAB (1-888-478-4522) (toll free in USA), or 1(312) 455-8498 (outside USA)

E: [proteintech@ptglab.com](mailto:proteintech@ptglab.com)

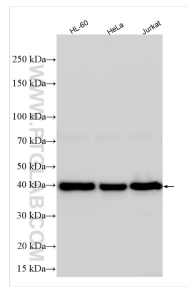
W: [ptglab.com](http://ptglab.com)

This product is exclusively available under Proteintech Group brand and is not available to purchase from any other manufacturer.

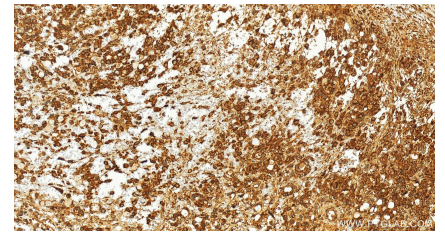
## Selected Validation Data



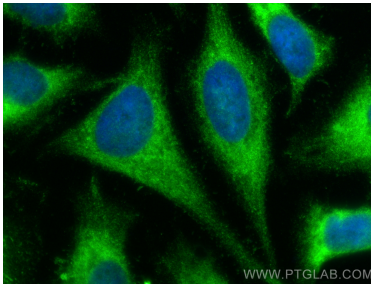
IP result of anti-DNAJB14 (IP:16501-1-AP, 4ug; Detection:16501-1-AP 1:1000) with Jurkat cells lysate 3080ug. This data was developed using the same antibody clone with 16501-1-PBS in a different storage buffer formulation.



Various lysates were subjected to SDS PAGE followed by western blot with 16501-1-AP (DNAJB14 antibody) at dilution of 1:6000 incubated at room temperature for 1.5 hours. This data was developed using the same antibody clone with 16501-1-PBS in a different storage buffer formulation.



Immunohistochemical analysis of paraffin-embedded human ovary cancer tissue slide using 16501-1-AP (DNAJB14 antibody) at dilution of 1:400 (under 20x lens). Heat mediated antigen retrieval with Tris-EDTA buffer (pH 9.0). This data was developed using the same antibody clone with 16501-1-PBS in a different storage buffer formulation.



Immunofluorescent analysis of (-20°C Ethanol) fixed HeLa cells using DNAJB14 antibody (16501-1-AP) at dilution of 1:400 and CoraLite®488-Conjugated Goat Anti-Rabbit IgG(H+L) (SA00013-2). This data was developed using the same antibody clone with 16501-1-PBS in a different storage buffer formulation.