

For Research Use Only

# WDR48 Polyclonal antibody

Catalog Number: 16503-1-AP

Featured Product

8 Publications



## Basic Information

### Catalog Number:

16503-1-AP

### Size:

150ul, Concentration: 350 ug/ml by Nanodrop and 227 ug/ml by Bradford method using BSA as the standard;

### Source:

Rabbit

### Isotype:

IgG

### Immunogen Catalog Number:

AG9674

### GenBank Accession Number:

BC037168

### GeneID (NCBI):

57599

### UNIPROT ID:

Q8TAF3

### Full Name:

WD repeat domain 48

### Calculated MW:

502aa, 57 kDa; 677aa, 76 kDa

### Observed MW:

70-80 kDa

### Purification Method:

Antigen affinity purification

### Recommended Dilutions:

WB 1:500-1:2000

IP 0.5-4.0 ug for 1.0-3.0 mg of total protein lysate

IHC 1:50-1:500

## Applications

### Tested Applications:

WB, IHC, IP, ELISA

### Cited Applications:

WB, IP

### Species Specificity:

human, mouse, rat

### Cited Species:

human, mouse

**Note-IHC: suggested antigen retrieval with TE buffer pH 9.0; (\*) Alternatively, antigen retrieval may be performed with citrate buffer pH 6.0**

### Positive Controls:

WB : HEK-293 cells, Jurkat cells, mouse heart tissue

IP : HEK-293 cells,

IHC : human intrahepatic cholangiocarcinoma tissue,

## Notable Publications

Author	Pubmed ID	Journal	Application
Yalei Zhao	32951278	Cell Prolif	WB
Molly Hodul	32587090	J Biol Chem	WB
Dianwen Han	33461373	Cell Cycle	WB

## Storage

### Storage:

Store at -20°C. Stable for one year after shipment.

### Storage Buffer:

PBS with 0.02% sodium azide and 50% glycerol pH 7.3.

Aliquoting is unnecessary for -20°C storage

\*\*\* 20ul sizes contain 0.1% BSA

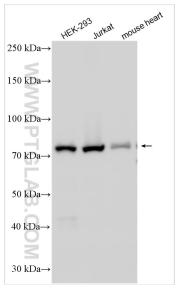
For technical support and original validation data for this product please contact:

T: 1 (888) 4PTGLAB (1-888-478-4522) (toll free in USA), or 1(312) 455-8498 (outside USA)

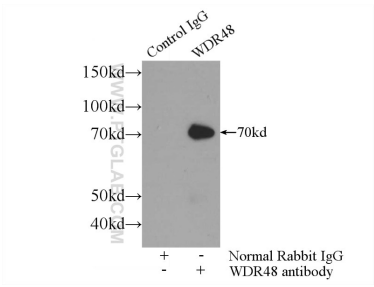
E: [proteintech@ptglab.com](mailto:proteintech@ptglab.com)  
W: [ptglab.com](http://ptglab.com)

This product is exclusively available under Proteintech Group brand and is not available to purchase from any other manufacturer.

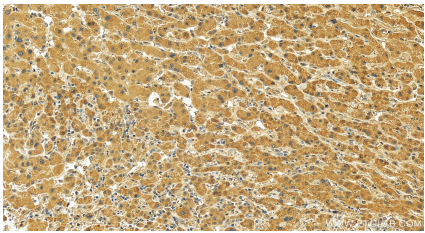
Selected Validation Data



Various lysates were subjected to SDS PAGE followed by western blot with 16503-1-AP (WDR48 antibody) at dilution of 1:1000 incubated at room temperature for 1.5 hours.



IP result of anti-WDR48 (IP:16503-1-AP, 3ug; Detection:16503-1-AP 1:500) with HEK-293 cells lysate 3000ug.



Immunohistochemical analysis of paraffin-embedded human intrahepatic cholangiocarcinoma tissue slide using 16503-1-AP (WDR48 antibody) at dilution of 1:200 (under 20x lens). Heat mediated antigen retrieval with Tris-EDTA buffer (pH 9.0).