

# FBXL8 Polyclonal antibody

Catalog Number: 16505-1-AP

## Basic Information

<b>Catalog Number:</b> 16505-1-AP	<b>GenBank Accession Number:</b> BC014414	<b>Purification Method:</b> Antigen affinity purification
<b>Size:</b> 150ul , Concentration: 393 µg/ml by Bradford method using BSA as the standard;	<b>GeneID (NCBI):</b> 55336	<b>Recommended Dilutions:</b> IHC 1:20-1:200
<b>Source:</b> Rabbit	<b>Full Name:</b> F-box and leucine-rich repeat protein 8	
<b>Isotype:</b> IgG	<b>Calculated MW:</b> 374 aa, 41 kDa	
<b>Immunogen Catalog Number:</b> AG9685		

## Applications

<b>Tested Applications:</b> IHC, ELISA	<b>Positive Controls:</b> IHC : human placenta tissue, human kidney tissue, human lung tissue, human ovary tissue, human spleen tissue, human testis tissue
<b>Species Specificity:</b> human, mouse, rat	
<b>Note-IHC: suggested antigen retrieval with TE buffer pH 9.0; (*) Alternatively, antigen retrieval may be performed with citrate buffer pH 6.0</b>	

## Background Information

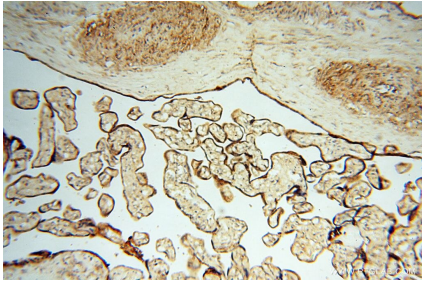
FBXL8(F-box/LRR-repeat protein 8) is also named as FBL8 and belongs to the F-box protein family, which are characterized by an approximately 40-amino acid F-box motif. The human FBXL8 protein contains an N-terminal F box, followed by 8 leucine-rich repeats. It interacts with SKP1 and CUL1 directly.

## Storage

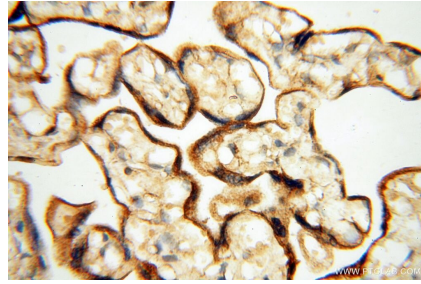
**Storage:**  
Store at -20°C. Stable for one year after shipment.  
**Storage Buffer:**  
PBS with 0.02% sodium azide and 50% glycerol pH 7.3.  
Aliquoting is unnecessary for -20°C storage

\*\*\* 20ul sizes contain 0.1% BSA

## Selected Validation Data



Immunohistochemical analysis of paraffin-embedded human placenta using 16505-1-AP (FBXL8 antibody) at dilution of 1:50 (under 10x lens).



Immunohistochemical analysis of paraffin-embedded human placenta using 16505-1-AP (FBXL8 antibody) at dilution of 1:50 (under 40x lens).