

For Research Use Only

GLIPR2 Polyclonal antibody

Catalog Number: 16508-1-AP



Basic Information

Catalog Number: 16508-1-AP	GenBank Accession Number: BC017918	Purification Method: Antigen affinity purification
Size: 150ul , Concentration: 350 ug/ml by Nanodrop;	GeneID (NCBI): 152007	Recommended Dilutions: WB 1:500-1:1000
Source: Rabbit	UNIPROT ID: Q9H4G4	IHC 1:50-1:500
Isotype: IgG	Full Name: GLI pathogenesis-related 2	IF/ICC 1:50-1:500
Immunogen Catalog Number: AG9725	Calculated MW: 153aa, 17 kDa; 90aa, 10 kDa	
	Observed MW: 17 kDa	

Applications

Tested Applications: WB, IHC, IF/ICC, ELISA	Positive Controls:
Species Specificity: human	WB : human milk,
Note-IHC: suggested antigen retrieval with TE buffer pH 9.0; (*) Alternatively, antigen retrieval may be performed with citrate buffer pH 6.0	IHC : human lung tissue,
	IF/ICC : A431 cells,

Background Information

Golgi-associated plant pathogenesis-related protein 1 (GLIPR2, also known as C9orf19 and GAPR1) is a multifunctional protein with dual engagement in normal cellular processes and the intricacies of cancer biology. GLIPR2 has also been associated with a spectrum of cellular functions encompassing the regulation of autophagy (PMID: 12137952; 18824526). It has been reported that GLIPR2 is a newly identified negative regulator of autophagy that inhibits the class III phosphatidylinositol 3-kinase complex I (PtdIns3K-C1) complex activity (PMID: 3322586).

Storage

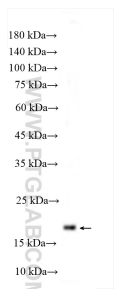
Storage:
Store at -20°C. Stable for one year after shipment.
Storage Buffer:
PBS with 0.02% sodium azide and 50% glycerol pH 7.3.
Aliquoting is unnecessary for -20°C storage

*** 20ul sizes contain 0.1% BSA

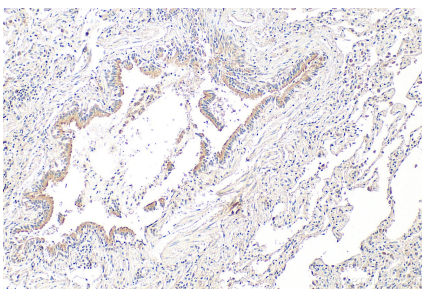
For technical support and original validation data for this product please contact:
T: 1 (888) 4PTGLAB (1-888-478-4522) (toll free in USA), or 1(312) 455-8498 (outside USA)
E: proteintech@ptglab.com
W: ptglab.com

This product is exclusively available under Proteintech Group brand and is not available to purchase from any other manufacturer.

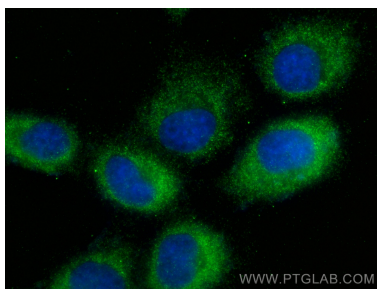
Selected Validation Data



human milk were subjected to SDS PAGE followed by western blot with 16508-1-AP (GLIPR2 antibody) at dilution of 1:600 incubated at room temperature for 1.5 hours.



Immunohistochemical analysis of paraffin-embedded human lung tissue slide using 16508-1-AP (GLIPR2 antibody) at dilution of 1:200 (under 10x lens). Heat mediated antigen retrieval with Tris-EDTA buffer (pH 9.0).



Immunofluorescent analysis of (-20°C Methanol) fixed A431 cells using GLIPR2 antibody (16508-1-AP) at dilution of 1:200 and CoraLite@488-Conjugated Goat Anti-Rabbit IgG(H+L) (SA00013-2).